

DUPAGRO DRILL PIPE WRENCHES



DUPAGRO is specialized in finding the right tool for the job, this is what we have done for many years now. In the next pages you will find the most common wrenches used for breaking up and bucking up drill pipe.

Please let us know what we can find you!

About Gearench

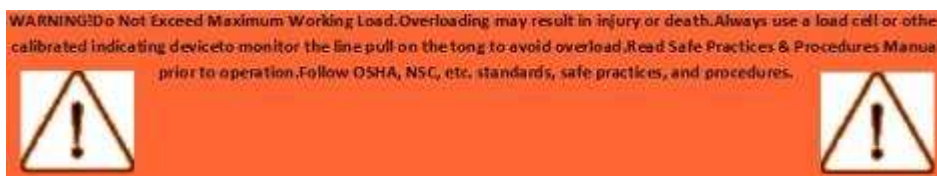
Gearench was founded in 1927 with the patent of its first product, the *Gearench*, a hand tool for use on small diameter pipe. From this original tool, the company has grown and developed over 40 product lines for use in various areas of the oil industry including exploration, drilling, production, refining and completion. Tools have also been developed for water well and trenchless technology drilling, as well as mining, power generation utilities, and general industrial markets.

GEARENCH PETOL BUCKUP TONGS

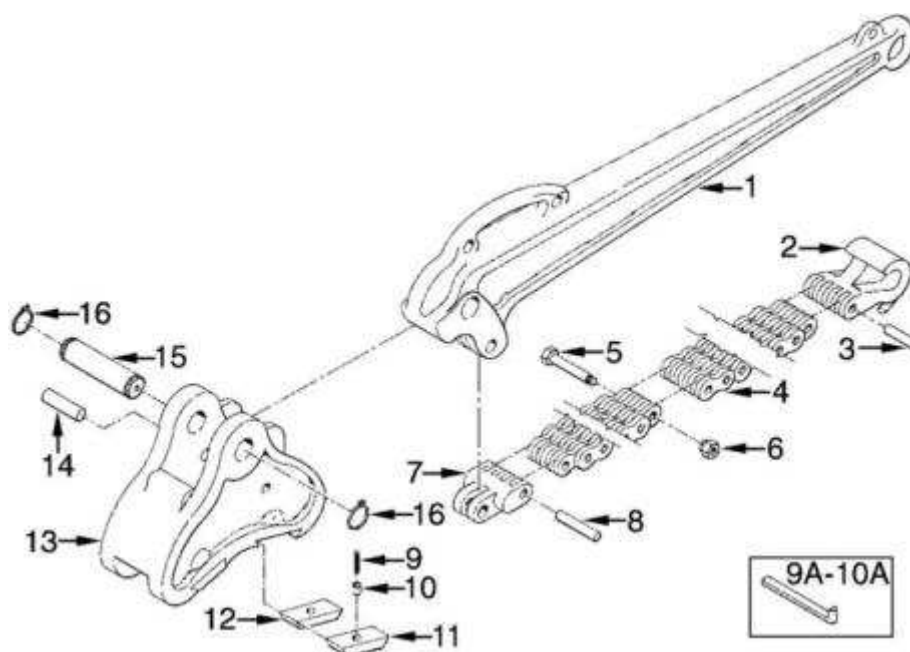


PETOL BUKUP TONGS are designed for use with a pipe machine for "bucking up" and "bucking off" tool joints. Larger sizes may be used for breaking out drill collars, reamers or similar heavy jobs. The wide range of each size of PETOL Bukup Tong reduces to a minimum the tools needed for handling the many sizes of tool joints. The PETOL Special Chain combinations used with this tong come complete with heavy-duty bolts, which make it possible to change quickly from one O.D. size to another. This tong grips in the upward motion and ratchets in the downward motion.

BUCKUP TONGS						
TYPE	O.D.*	GRIPPING WIDTH	HANDLE LENGTH	WEIGHT**	US MAXIMUM WORKING LOAD	Nm MAXIMUM WORKING LOAD
BA115H	2-1/8" - 8"	4.66"	48"	64 lbs.	16,000 ft.-lbs.	21.680 Nm
BA116	4" - 10"	6.00"	48"	122 lbs.	42,000 ft.-lbs.	56.910 Nm
BA116H	4-1/4" - 10-3/4"	6.06"	48"	147 lbs.	66,000 ft.-lbs.	89.430 Nm
BA120	6" - 22"	10.88"	72"	546 lbs.	request torque table	request torque table
*Chain assemblies must be ordered separately. See chain guide.						
**Weights do not include chain.						



GEARENCH PETOL BUCKUP TONGS



PETOL BUCKUP TONG		
KEY NO	ITEM DESCRIPTION	NO. REQ'D.
1	HANDLE	1
2	CHAIN HOOK	1
3	CHAIN HOOK PIN	1
4	SPECIAL CHAIN ONLY	1
5	SPLICE BOLT & NUT	as req.d'
7	MASTER LINK	1
8	MASTER LINK CHAIN PIN	1
9	INSERT KEY SPRING *	4
10	INSERT KEY*	4
11	INSERT	4
12	BLANK INSERT	2
13	JAW	1
14	MASTER LINK HANDLE PIN	1
15,16	JAW PIN W/ KLIPRIINGS	1
* OLDER MODEL TONGS REQUIRE INSERT PIN (9A-10A) IN PLACE OF INSERT KEY SPRING (9) AND INSERT KEY (10) NOTE: PARTS MAY VARY SLIGHTLY AMONG SIZES.		

GEARENCH DRILL PIPE TONGS



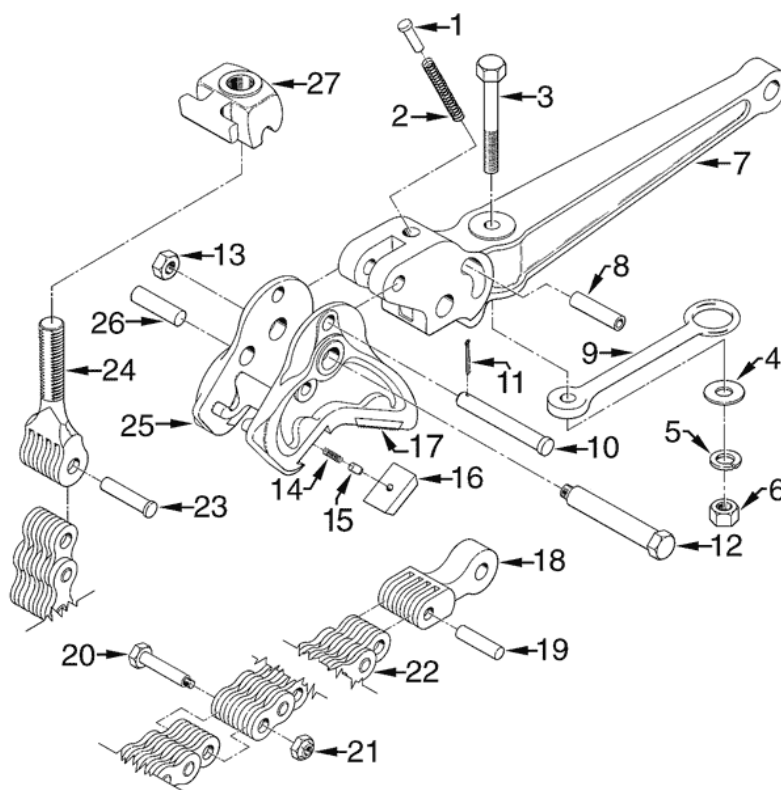
PETOL DRILL PIPE TONGS are designed for making up and breaking out drill pipe, casing, and pneumatic drills on light rigs. These tongs are furnished as original equipment by rig manufacturers because of their ease in handling, quick application, and ability to withstand rugged use.

Drill Pipe Tongs						
TYPE	O.D.*	GRIPPING WIDTH	HANDLE LENGTH **	WEIGHT*** Kg	Torque Nm at minimum OD **	Torque Nm at maximum OD **
DA1344	1" - 6"	4"	8"	5,45	6.775Nm	6.775Nm
DA2344-C12	2-1/8" - 5"	4.44"	12"	12,25	16.800Nm	18.699Nm
DA2344-L21	2-1/8" - 5"	4.44"	21"	14,00	15.447Nm	16.260Nm
DA4174-L08	3" - 8-1/4"	5.00"	8"	18,14	25.338Nm	31.571Nm
DA4174-C12	3" - 8-1/4"	5.00"	12"	19,50	23.899Nm	23.712Nm
DA4174-L21	3" - 8-1/4"	5.00"	21"	20,41	12.737Nm	17.886Nm
DA6184-C10	4-1/4" - 10-3/4"	4.88"	10"	22,23	36.907Nm	50.541Nm
DA6184-L36	4-1/4" - 10-3/4"	4.88"	36"	33,57	23.700Nm	34.417Nm
DA8184-C09	4" - 14"	7.25"	9"	41,28	66.801Nm	128.725Nm
DA8184-C18	4" - 14"	7.25"	18"	54,43	62.059Nm	96.069Nm
DA8184-L23	4" - 14"	7.25"	23"	51,71	60.704Nm	88.075Nm
DA8184-L28	4" - 14"	7.25"	28"	55,34	59.620Nm	83.874Nm
DA8184-L36	4" - 14"	7.25"	36"	58,51	58.942Nm	79.132Nm
	*Chain assemblies must be ordered separately. See chain guide.					
	**Call / email us for torque arm lengths.					
	***Weights do not include chain.					

WARNING: Do Not Exceed Maximum Working Load. Overloading may result in injury or death. Always use a load cell or other calibrated indicating device to monitor the line pull on the tong to avoid overload. Read Safe Practices & Procedures Manual prior to operation. Follow OSHA, NSC, etc. standards, safe practices, and procedures.



GEARENCH DRILL PIPE TONGS



DRILL PIPE TONG		
KEY NO	ITEM DESCRIPTION	NO. REQ'D.
1	SPRING GUIDE	1
2	SPRING	1
3,4,5,6	HANGER BOLT & NUT ASSEMBLY	1
7	HANDLE	1
8	SPRING PIN BUSHING	1
9	HANGER	1
10,11	SPRING PIN W/COTTER	1
12,13	JAW BOLT & NUT	1
14	INSERT KEY SPRING	4
15	INSERT KEY	4
16	BLANK INSERT	2
17	INSERT	2
18	MASTER LINK	1
19	MASTER LINK CHAIN PIN	1
20,21	SPLICE BOLT & NUT	as req'd.
22	SPECIAL CHAIN ONLY	1
23	CHAIN SCREW PIN	1
24	CHAIN SCREW	1
25	JAW	1
26	MASTER LINK HANDLE PIN	1
27	CHAIN SCREW NUT	1
NOTE: PARTS MAY VARY SLIGHTLY AMONG SIZES.		

GEARENCH PETOL BULL TONGS

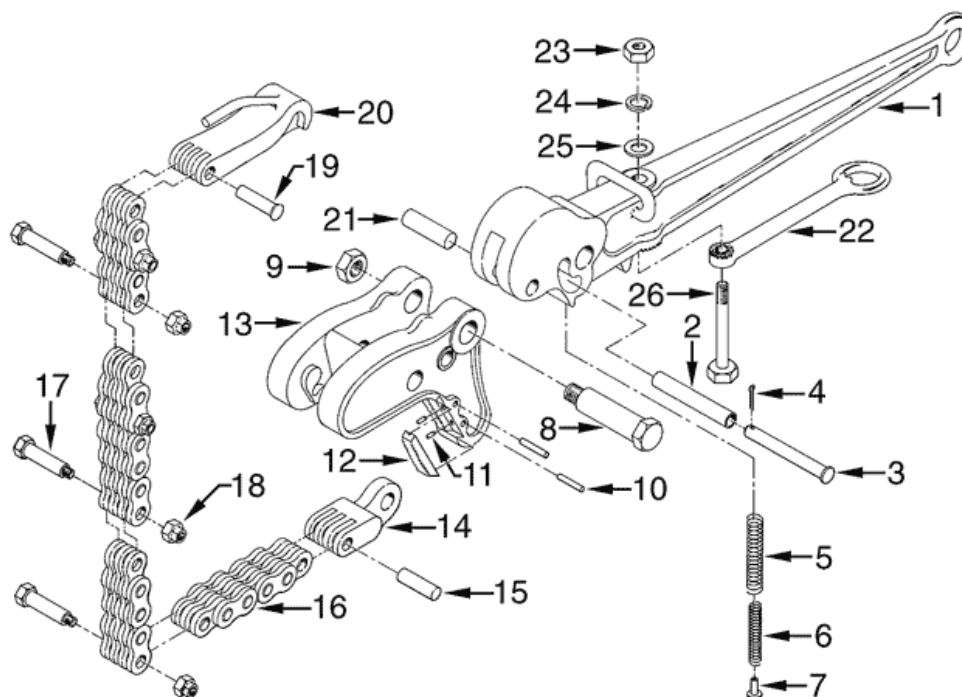


PETOL BULL TONGS are the most versatile tools available for making up or breaking out tool and pipe joints in the shop as well as on the drilling rig. Positive grip, perfect ratcheting, noncrushing and nonjamming features make these tongs the ideal choice for many jobs. This tong grips in the downward motion and ratchets in the upward motion. The LA16H can be furnished with a 2-2 chain combination for added speed in latching, unlatching, and O.D. adjustment when working with lower torque requirements. The 2-2 chain is standard on the LA155-16. This tong grips in the downward motion and ratchets in the upward motion.

BULL TONGS						
TYPE	O.D.*	GRIPPING WIDTH	HANDLE LENGTH	WEIGHT**	US MAXIMUM WORKING LOAD	Nm MAXIMUM WORKING LOAD
LA155-16	3-1/2" - 16"	4.38"	32"	67 lbs.	request torque table	request torque table
LA16H	4" - 16"	6.88"	36"	96 lbs.	request torque table	request torque table
LA116-C09	6" - 17"	7.55"	9"	95 lbs.	request torque table	request torque table
LA116-C18	6" - 17"	7.55"	18"	124 lbs.	request torque table	request torque table
LA116-23	6" - 17"	7.55"	23"	118 lbs.	request torque table	request torque table
LA116-28	6" - 17"	7.55"	28"	126 lbs.	request torque table	request torque table
LA116	5" - 17"	7.55"	36"	133 lbs.	request torque table	request torque table
LA120	6" - 22"	10.00"	72"	376 lbs.	request torque table	request torque table
LA116H	16" - 40"	7.63"	36"	218 lbs.	request torque table	request torque table
LA116HX	30-1/8" - 65-7/8"	7.56"	36"	238 lbs.	request torque table	request torque table
	*Chain assemblies must be ordered separately. See chain guide.					
	**Call or email us for torque arm lengths.					
	***Weights do not include chain.					

WARNING! Do Not Exceed Maximum Working Load. Overloading may result in injury or death. Always use a load cell or other calibrated indicating device to monitor the line pull on the tong to avoid overload. Read Safe Practices & Procedures Manual prior to operation. Follow OSHA, NSC, etc. standards, safe practices, and procedures.





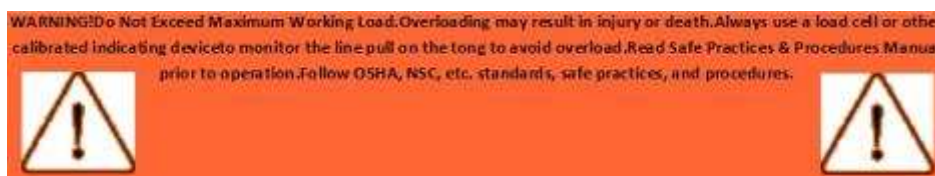
BULL TONG PARTS		
KEY NO	ITEM DESCRIPTION	NO. REQ'D.
1	HANDLE	1
2	SPRING PIN BUSHING	1
3,4	SPRING PIN W/COTTER	1
5	SPRING (OUTSIDE)	1
6	SPRING (INSIDE)	1
7	SPRING GUIDE	1
8,9	JAW BOLT & NUT	1
10	INSERT PIN	4
11	INSERT KEY	8
12	INSERT	4
13	JAW	1
14	MASTER LINK	1
15	MASTER LINK CHAIN PIN	1
16	SPECIAL CHAIN ONLY	1
17,18	SPLICE BOLT & NUT	as req'd
19	CHAIN HOOK PIN	1
20	CHAIN HOOK	1
21	MASTER LINK HANDLE PIN	1
22	HANGER	1
23,24,25,26	HANGER BOLT & NUT ASSEMBLY	1
NOTE: PARTS AND/OR NO. REQ'D. MAY VARY SLIGHTLY AMONG SIZES. Contact us for details.		

GEARENCH PETOL MACHINE TONGS

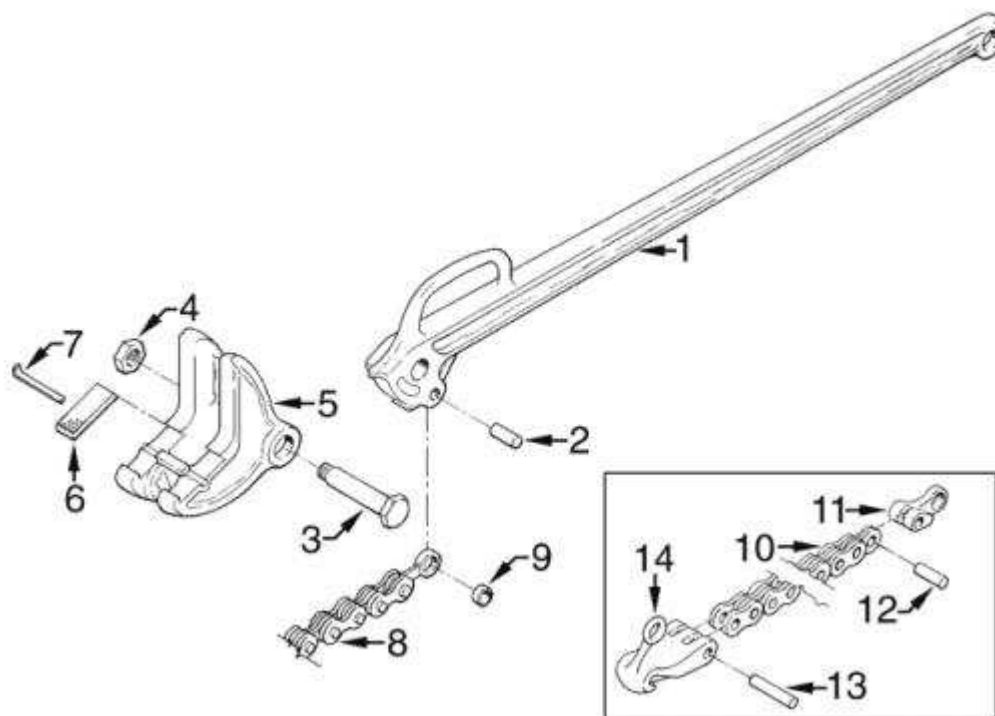


PETOL MACHINE TONGS provide positive grip in the upward motion and perfect ratcheting in the downward motion. Noncrushing and nonjamming action are features that make this tong outstanding. The MA16HS can be furnished with a 3-4 chain combination for higher torque requirements.

PETOL Machine Tongs						
CATALOG NO.	O.D.*	GRIPPING WIDTH	HANDLE LENGTH**	WEIGHT***	MAXIMUM WORKING LOAD	Nm MAXIMUM WORKING LOAD
MA15S	2" - 10"	4.00"	28"	37 lbs.	5,000 ft.-lbs.	6.775 Nm
MA15S-16S	3" - 16"	5.00"	32"	54 lbs.	8,950 ft.-lbs.	12.127 Nm
MA16HS (2-2 Chain)	4" - 16"	5.25"	35"	85 lbs.	11,500 ft.-lbs.	15.582 Nm
MA16HS (3-4 Chain)	4" - 16"	5.25"	35"	85 lbs.	17,500 ft.-lbs.	23.712 Nm
*Chain assemblies must be ordered separately. See chain guide.						
**Call factory for torque arm lengths.						
***Weights do not include chain.						

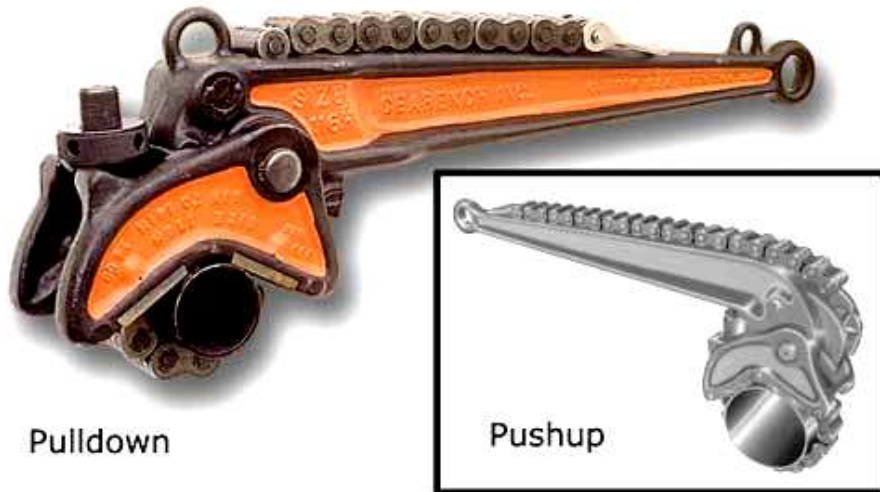


GEARENCH PETOL MACHINE TONGS



PETOL Machine Tong		
KEY NO	ITEM DESCRIPTION	NO. REQ'D.
1	HANDLE	1
2	MASTER LINK HANDLE PIN	1
3,4	JAW BOLT & NUT	1
5	JAW	1
6	INSERT	2
7	INSERT PIN	1
8	PETOL SPECIAL CHAIN	1
	W/MASTER LINK	
9	MASTER LINK BUSHING	1
10	SPECIAL CHAIN ONLY	1
11	MASTER LINK	1
12	MASTER LINK CHAIN PIN	1
13	CHAIN HOOK PIN	1
14	CHAIN HOOK	1

GEARENCH PETOL VISETONGS

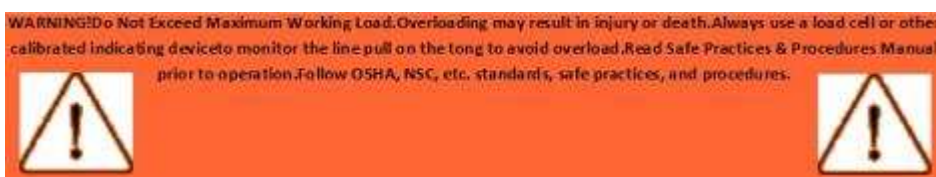


PETOL VISETONGS are designed to operate best when large makeup torques are required and when heavy loads are needed to breakout tool joints, drill collars, reamers, and similar heavy jobs. A hydraulic cylinder can be attached to the end of the tong handle.

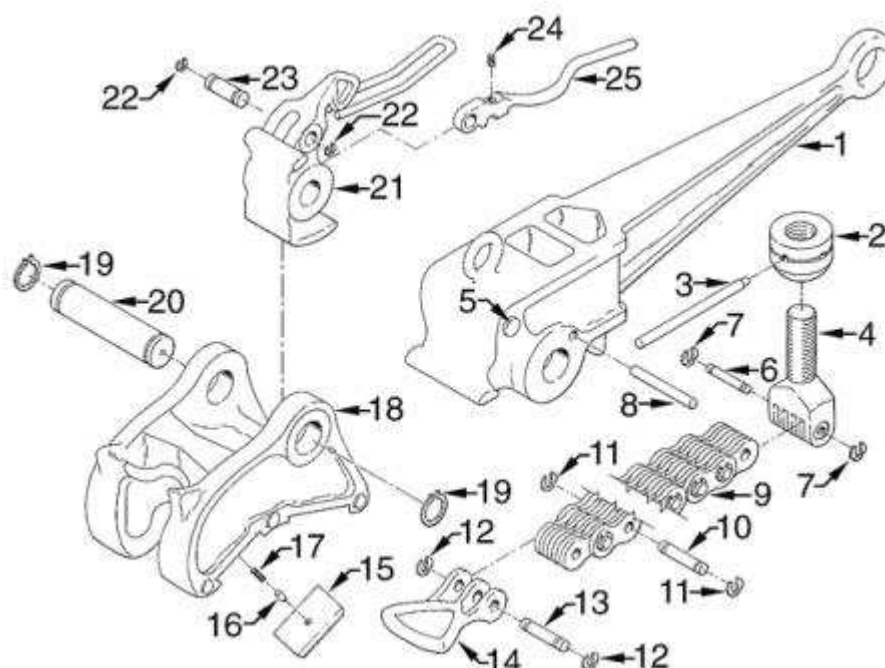
PETOL VISETONGS have the unique feature of being easily adjusted to various pipe sizes by simply sliding the heat-treated PETOL Special Chain through the jaw of the tong and engaging the locking cam lever. Regardless of the load on the handle, these tongs will not jam.

PETOL VISETONGS have minimum crushing effect, and great strength for their weight. Made of high-quality steel, these tongs are equipped with replaceable high-speed steel PETOL Diamond Point Inserts, which minimize marring of pipe surfaces. PETOL VISETONGS come in both pushup and pulldown designs.

VISETONGS						
CATALOG NO.	O.D.*	GRIPPING WIDTH	HANDLE LENGTH	WEIGHT**	US MAXIMUM WORKING LOAD	Nm MAXIMUM WORKING LOAD
PULLDOWN VISETONGS						
VTDA115H	2" - 8"	5.25"	24"	79 lbs.	14,000 ft.-lbs.	18.970 Nm
VTDA116H	4" - 14"	7.25"	36"	176 lbs.	50,000 ft.-lbs.	67.750 Nm
VTDA118	4" - 24"	9.00"	46"	317 lbs.	90,000 ft.-lbs.	121.950 Nm
VTDA120	6" - 24"	12.63"	36"	575 lbs.	235,000 ft.-lbs.	318.425 Nm
PUSHUP VISETONGS						
VTUA118	4" - 24"	9.00"	54"	328 lbs.	75,000 ft.-lbs.	101.625 Nm
VTUA118-L36	4" - 24"	9.00"	36"	294 lbs.	72,000 ft.-lbs.	97.560 Nm
VTUA120	6" - 24"	12.63"	42"	559 lbs.	182,500 ft.-lbs.	247.287 Nm
*Chain assemblies must be ordered separately. See chain guide.						
**Weights do not include chain.						



GEARENCH PETOL VISETONGS



PETOL Visetong		
KEY NO	ITEM DESCRIPTION	NO. REQ'D.
1	HANDLE	1
2	CHAIN SCREW NUT	1
3	CHAIN SCREW NUT LEVER	1
4	CHAIN SCREW	1
5	HANDLE PIN	1
6,7	CHAIN SCREW	1
	PIN W/KLIPRINGS	
8	LATCH PIN	1
9	SPECIAL CHAIN ONLY	1
10	CHAIN PIN	as req'd.
11	CHAIN PIN KLIPRING ONLY	as req'd.
12,13	CHAIN HANDLE	1
	PIN W/KLIPRINGS	
14	CHAIN HANDLE	1
15	INSERT	4
16	INSERT KEY	4
17	INSERT KEY SPRING	4
18	JAW	1
19,2	JAW PIN W/KLIPRINGS	1
21	PAWL	1
22,23	PAWL LATCH	1
	RIVET W/KLIPRINGS	
24	LATCH SPRING	1
25	PAWL LATCH	1
	NOTE: PARTS MAY VARY SLIGHTLY AMONG SIZES	

GEARENCH PETOL TONGVISE

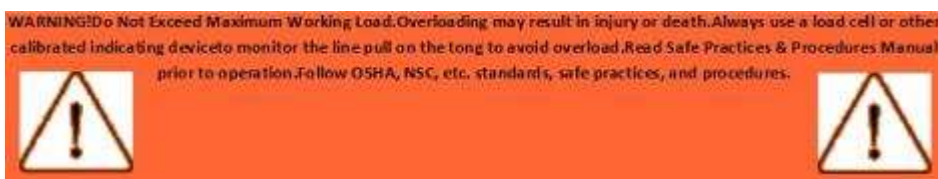


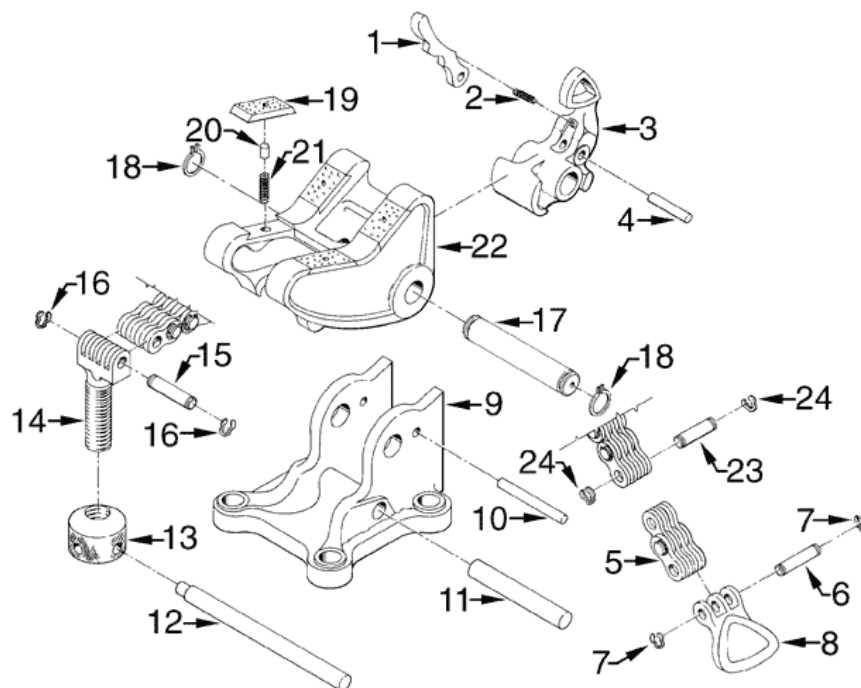
PETOL TONGVISES are designed for heavy-duty breakout or makeup operations. The TONGVISE takes the place of several vises used in pipe yards, machine shops, downhole tool shops and on offshore drilling platforms.

PETOL TONGVISES have the unique feature of being easily adjusted to various pipe sizes by simply sliding the heat-treated PETOL Special chain through the jaw of the vise and engaging the locking cam lever. Regardless of the load being applied these vises will not jam.

The vise is quickly adjusted to fit any O.D. within its capacity, and incorporates a self-tightening feature which increases the grip as the torque increases. The Tongvise is equipped with replaceable high-speed steel PETOL Diamond Point Inserts for minimum marring of pipe surfaces.

TONGVISE					
CATALOG NO.	O.D.*	GRIPPING WIDTH	WEIGHT**	US MAXIMUM WORKING LOAD	Nm MAXIMUM WORKING LOAD
PULLDOWN VISETONGS					
TVA115H	2" - 8"	5.25"	79 lbs.	14,000 ft.-lbs.	18970 Nm
TVA116	4" - 14"	7.00"	176 lbs.	38,500 ft.-lbs.	52198 Nm
TVA116H	4" - 14"	7.25"	317 lbs.	50,000 ft.-lbs.	67750 Nm
TVA118	4" - 24"	9.00"	575 lbs.	90,000 ft.-lbs.	121950 Nm
TVA120	6" - 24"	12.63"		235,000 ft.-lbs.	318425 Nm
	*Chain assemblies must be ordered separately. See chain guide. **Weights do not include chain.				





PETOL TONGVISE		
KEY NO	ITEM DESCRIPTION	NO. REQ'D.
1	PAWL LATCH	1
2	LATCH SPRING	1
3	PAWL	1
4	PAWL LATCH RIVET	1
5	SPECIAL CHAIN ONLY	1
6,7	CHAIN HANDLE PIN W/KLIPRINGS	1
8	CHAIN HANDLE	1
9	BASE	1
10	LATCH PIN	1
11	BASE PIN	1
12	CHAIN SCREW NUT LEVER	1
13	CHAIN SCREW NUT	1
14	CHAIN SCREW	1
15,16	CHAIN SCREW PIN W/KLIPRINGS	1
17,18	JAW PIN W/KLIPRINGS	1
19	INSERT	4
20	INSERT KEY	4
21	INSERT KEY SPRING	4
22	JAW	1
23	CHAIN PIN	as req'd.
24	CHAIN PIN KLIPRING	as req'd.
	NOTE: PARTS MAY VARY SLIGHTLY AMONG SIZES	