

GEARENCH PETOL BULL TONGS

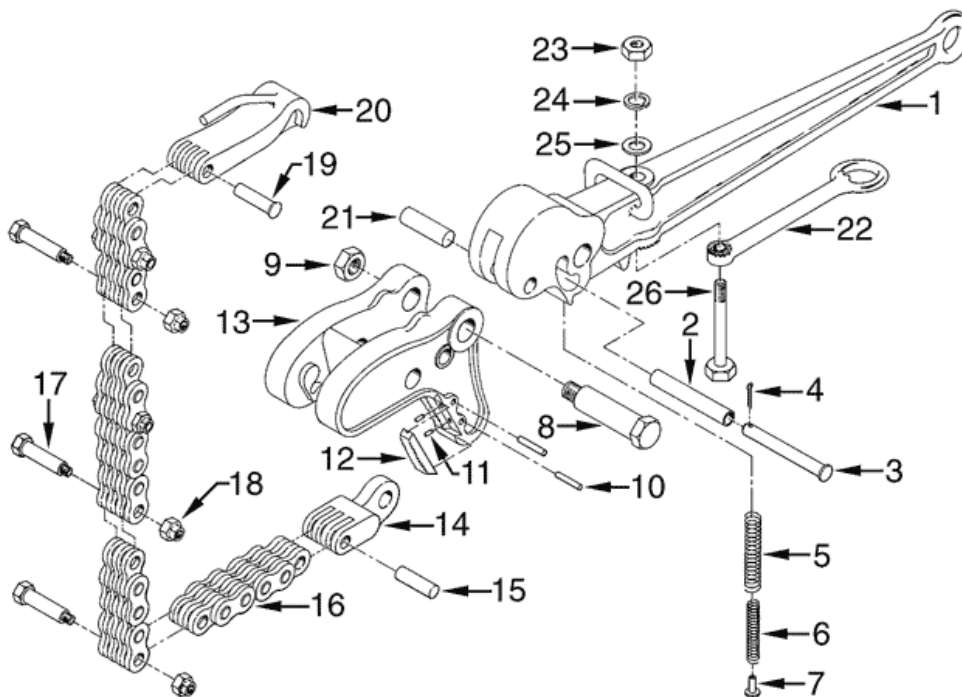


PETOL BULL TONGS are the most versatile tools available for making up or breaking out tool and pipe joints in the shop as well as on the drilling rig. Positive grip, perfect ratcheting, noncrushing and nonjamming features make these tongs the ideal choice for many jobs. This tong grips in the downward motion and ratchets in the upward motion. The LA16H can be furnished with a 2-2 chain combination for added speed in latching, unlatching, and O.D. adjustment when working with lower torque requirements. The 2-2 chain is standard on the LA155-16. This tong grips in the downward motion and ratchets in the upward motion.

BULL TONGS						
TYPE	O.D.*	GRIPPING WIDTH	HANDLE LENGTH	WEIGHT**	US MAXIMUM WORKING LOAD	Nm MAXIMUM WORKING LOAD
LA155-16	3-1/2" - 16"	4.38"	32"	67 lbs.	request torque table	request torque table
LA16H	4" - 16"	6.88"	36"	96 lbs.	request torque table	request torque table
LA116-C09	6" - 17"	7.55"	9"	95 lbs.	request torque table	request torque table
LA116-C18	6" - 17"	7.55"	18"	124 lbs.	request torque table	request torque table
LA116-23	6" - 17"	7.55"	23"	118 lbs.	request torque table	request torque table
LA116-28	6" - 17"	7.55"	28"	126 lbs.	request torque table	request torque table
LA116	5" - 17"	7.55"	36"	133 lbs.	request torque table	request torque table
LA120	6" - 22"	10.00"	72"	376 lbs.	request torque table	request torque table
LA116H	16" - 40"	7.63"	36"	218 lbs.	request torque table	request torque table
LA116HX	30-1/8" - 65-7/8"	7.56"	36"	238 lbs.	request torque table	request torque table
*Chain assemblies must be ordered separately. See chain guide.						
**Call or email us for torque arm lengths.						
***Weights do not include chain.						

WARNING! Do Not Exceed Maximum Working Load. Overloading may result in injury or death. Always use a load cell or other calibrated indicating device to monitor the line pull on the tong to avoid overload. Read Safe Practices & Procedures Manual prior to operation. Follow OSHA, NSC, etc. standards, safe practices, and procedures.





BULL TONG PARTS		
KEY NO	ITEM DESCRIPTION	NO. REQ'D.
1	HANDLE	1
2	SPRING PIN BUSHING	1
3,4	SPRING PIN W/COTTER	1
5	SPRING (OUTSIDE)	1
6	SPRING (INSIDE)	1
7	SPRING GUIDE	1
8,9	JAW BOLT & NUT	1
10	INSERT PIN	4
11	INSERT KEY	8
12	INSERT	4
13	JAW	1
14	MASTER LINK	1
15	MASTER LINK CHAIN PIN	1
16	SPECIAL CHAIN ONLY	1
17,18	SPLICE BOLT & NUT	as req'd
19	CHAIN HOOK PIN	1
20	CHAIN HOOK	1
21	MASTER LINK HANDLE PIN	1
22	HANGER	1
23,24,25,26	HANGER BOLT & NUT ASSEMBLY	1
NOTE: PARTS AND/OR NO. REQ'D. MAY VARY SLIGHTLY AMONG SIZES. Contact us for details.		