

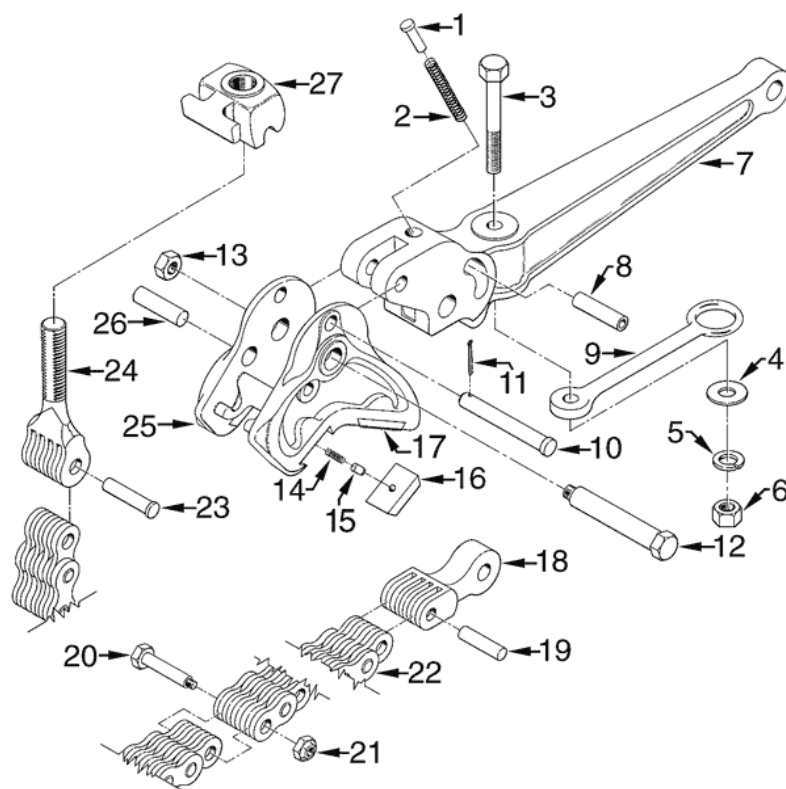
## GEARENCH DRILL PIPE TONGS



PETOL DRILL PIPE TONGS are designed for making up and breaking out drill pipe, casing, and pneumatic drills on light rigs. These tongs are furnished as original equipment by rig manufacturers because of their ease in handling, quick application, and ability to withstand rugged use.

Drill Pipe Tongs						
TYPE	O.D.*	GRIPPING WIDTH	HANDLE LENGTH **	WEIGHT*** Kg	Torque Nm at minimum OD **	Torque Nm at maximum OD **
DA1344	1" - 6"	4"	8"	5,45	6.775Nm	6.775Nm
DA2344-C12	2-1/8" - 5"	4.44"	12"	12,25	16.800Nm	18.699Nm
DA2344-L21	2-1/8" - 5"	4.44"	21"	14,00	15.447Nm	16.260Nm
DA4174-L08	3" - 8-1/4"	5.00"	8"	18,14	25.338Nm	31.571Nm
DA4174-C12	3" - 8-1/4"	5.00"	12"	19,50	23.899Nm	23.712Nm
DA4174-L21	3" - 8-1/4"	5.00"	21"	20,41	12.737Nm	17.886Nm
DA6184-C10	4-1/4" - 10-3/4"	4.88"	10"	22,23	36.907Nm	50.541Nm
DA6184-L36	4-1/4" - 10-3/4"	4.88"	36"	33,57	23.700Nm	34.417Nm
DA8184-C09	4" - 14"	7.25"	9"	41,28	66.801Nm	128.725Nm
DA8184-C18	4" - 14"	7.25"	18"	54,43	62.059Nm	96.069Nm
DA8184-L23	4" - 14"	7.25"	23"	51,71	60.704Nm	88.075Nm
DA8184-L28	4" - 14"	7.25"	28"	55,34	59.620Nm	83.874Nm
DA8184-L36	4" - 14"	7.25"	36"	58,51	58.942Nm	79.132Nm
*Chain assemblies must be ordered separately. See chain guide.						
**Call / email us for torque arm lengths.						
***Weights do not include chain.						

**WARNING! Do Not Exceed Maximum Working Load.** Overloading may result in injury or death. Always use a load cell or other calibrated indicating device to monitor the line pull on the tong to avoid overload. Read Safe Practices & Procedures Manual prior to operation. Follow OSHA, NSC, etc. standards, safe practices, and procedures.



Drill Pipe Tongs		
KEY NO	ITEM DESCRIPTION	NO. REQ'D.
1	SPRING GUIDE	1
2	SPRING	1
3,4,5,6	HANGER BOLT & NUT ASSEMBLY	1
7	HANDLE	1
8	SPRING PIN BUSHING	1
9	HANGER	1
10,11	SPRING PIN W/COTTER	1
12,13	JAW BOLT & NUT	1
14	INSERT KEY SPRING	4
15	INSERT KEY	4
16	BLANK INSERT	2
17	INSERT	2
18	MASTER LINK	1
19	MASTER LINK CHAIN PIN	1
20,21	SPLICE BOLT & NUT	as req'd.
22	SPECIAL CHAIN ONLY	1
23	CHAIN SCREW PIN	1
24	CHAIN SCREW	1
25	JAW	1
26	MASTER LINK HANDLE PIN	1
27	CHAIN SCREW NUT	1

NOTE: PARTS MAY VARY SLIGHTLY AMONG SIZES.