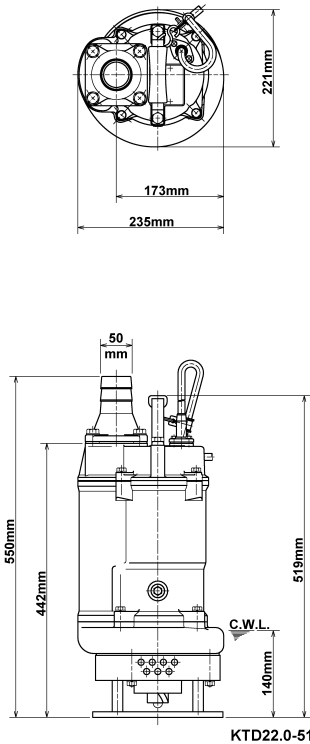
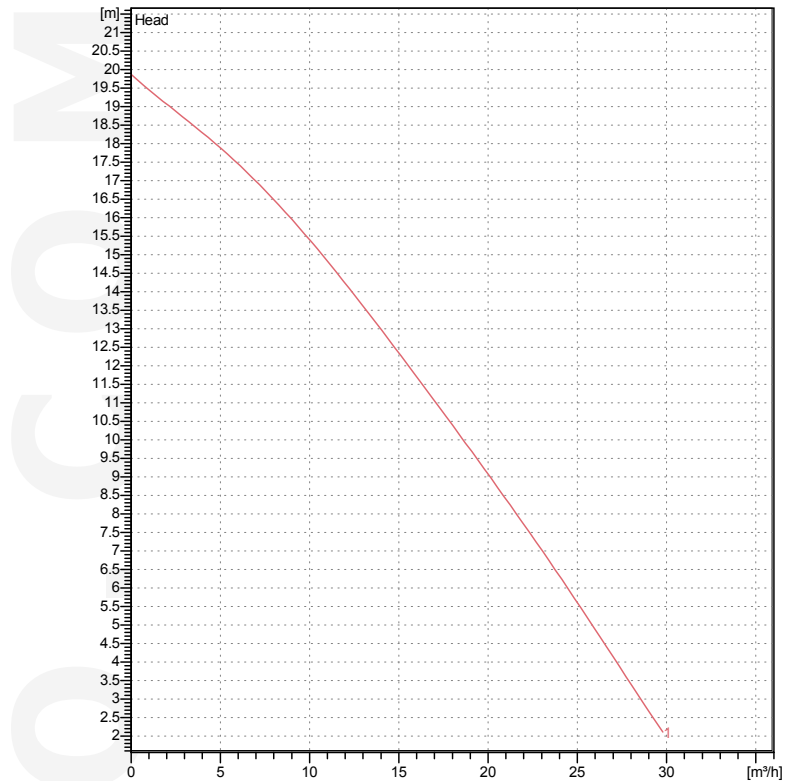


Data sheet KTD22.0-51



KTD22.0-51

CWL: Continuous running water level



Specification

Electric submersible pump
 Degree of protection IP 68
 Depth of submersion max. 25 m
 Type of impeller Semi-open
 Max. solid handling 10 mm
 Suitable for:
 spring-/rain-/waste-/ground water, water containing sand

Electric motor

Dry-type submersible induction motor
 Insulation class F 2Poles 2840 1/min
 Starting mode Directly
 Rated voltage 400 V 50 Hz 3~
 Power uptake 2.53 kW
 Rated power 2.00 kW
 Rated current 4.5 A
 Start current 34.0 A

Cable

20m NSSHÖU 4Cx1,5mm²

Motor Protection

Circle thermal protector
 (snap-action bi-metal device)

Shaft seal

Double inside mechanical seal in oil bath
 additional lubrication by oil lifting device
 Primary seal
 Silicon carbide on silicon carbide
 Secondary seal
 Silicon carbide on silicon carbide

Bearings

Shielded ball bearings, maintenance-free

Materials

Impeller	Chromium Iron HiCrFC
Agitator	FCD700 (EN-GJS-700-2)
Pump casing	FC200 (EN-GJL-200)
Suction cover	FCD50 (EN-GJS-500-7)
Motor Frame	FC150 (EN-GJL-150)
Shaft	SUS420J2 (EN-X30Cr13)

Discharge size

2" (50mm) BS-Coupling (threaded flange)

Weight

38 kg (dry weight of the pump only without cable)

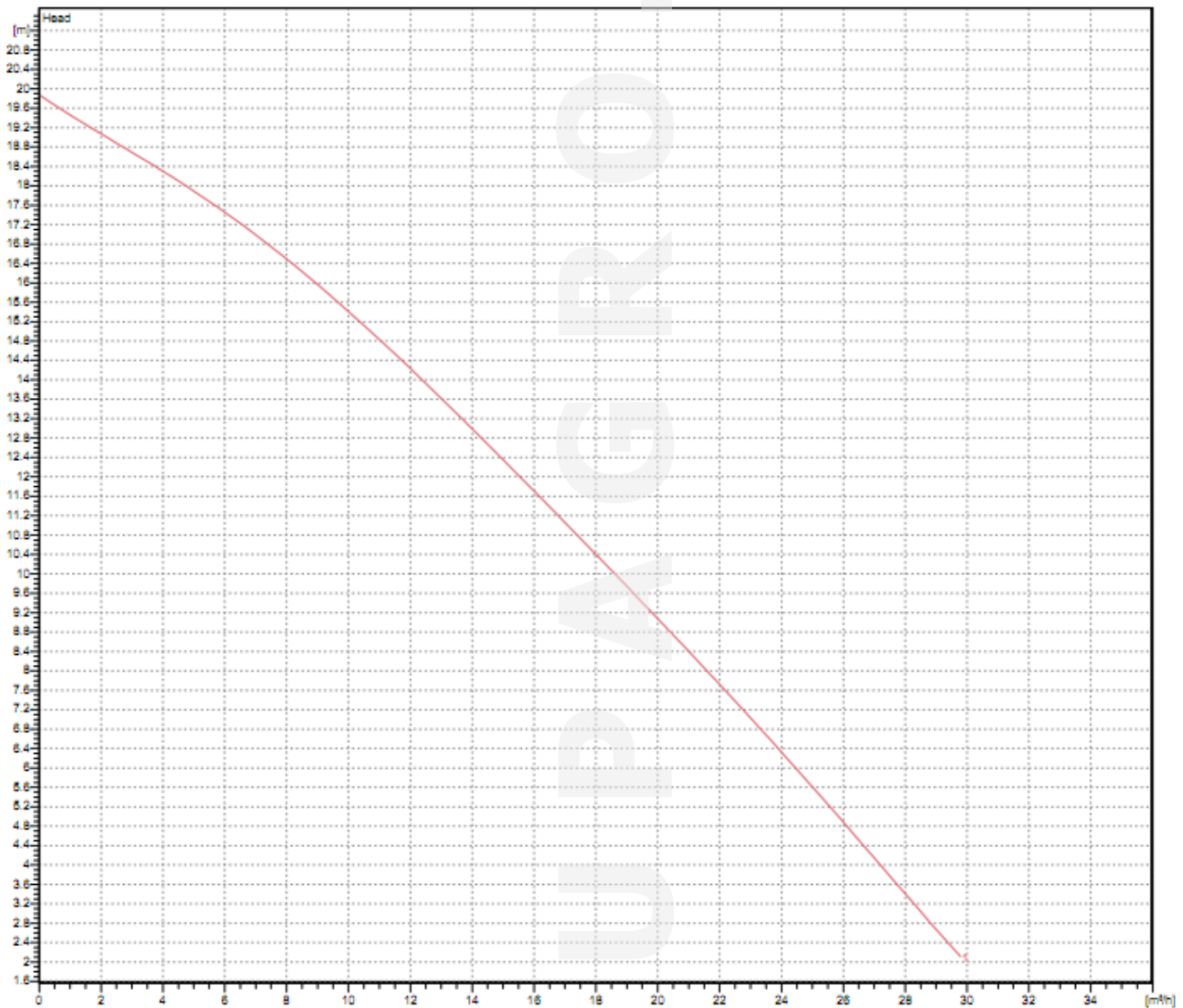
Dupagro B.V.

Ooststeeg 102
 6708 AX Wageningen
 The Netherlands

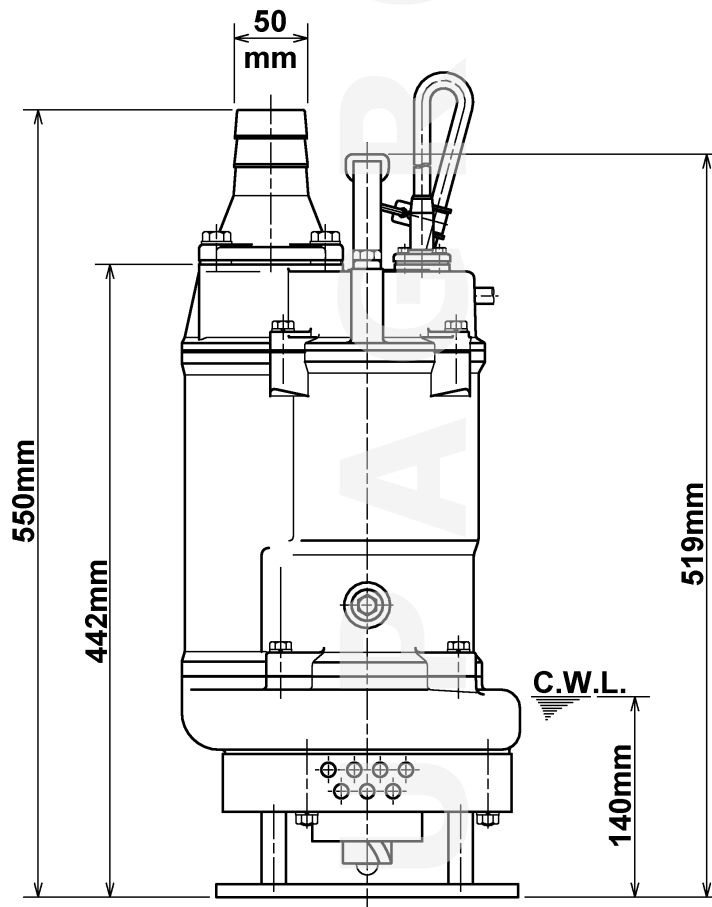
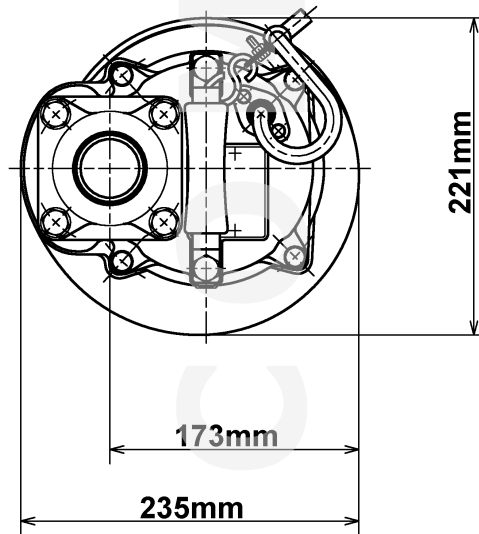
Phone +31 (0) 317 840 197
info@dupagro.com
www.dupagro.com

Performance curve KTD22.0-51

Discharge port	2"
Head	19.9 m
Flow	29.8 m ³ /h
Rated power	2.00 kW
Power input	2.53 kW
Phases	3~
Voltages	400 V
Frequency	50 Hz
Rated current	4.5 A
Starting current	33.98 A
Number of poles	2
Speed	2840 1/min
Starting mode	Directly
Insulation class	F



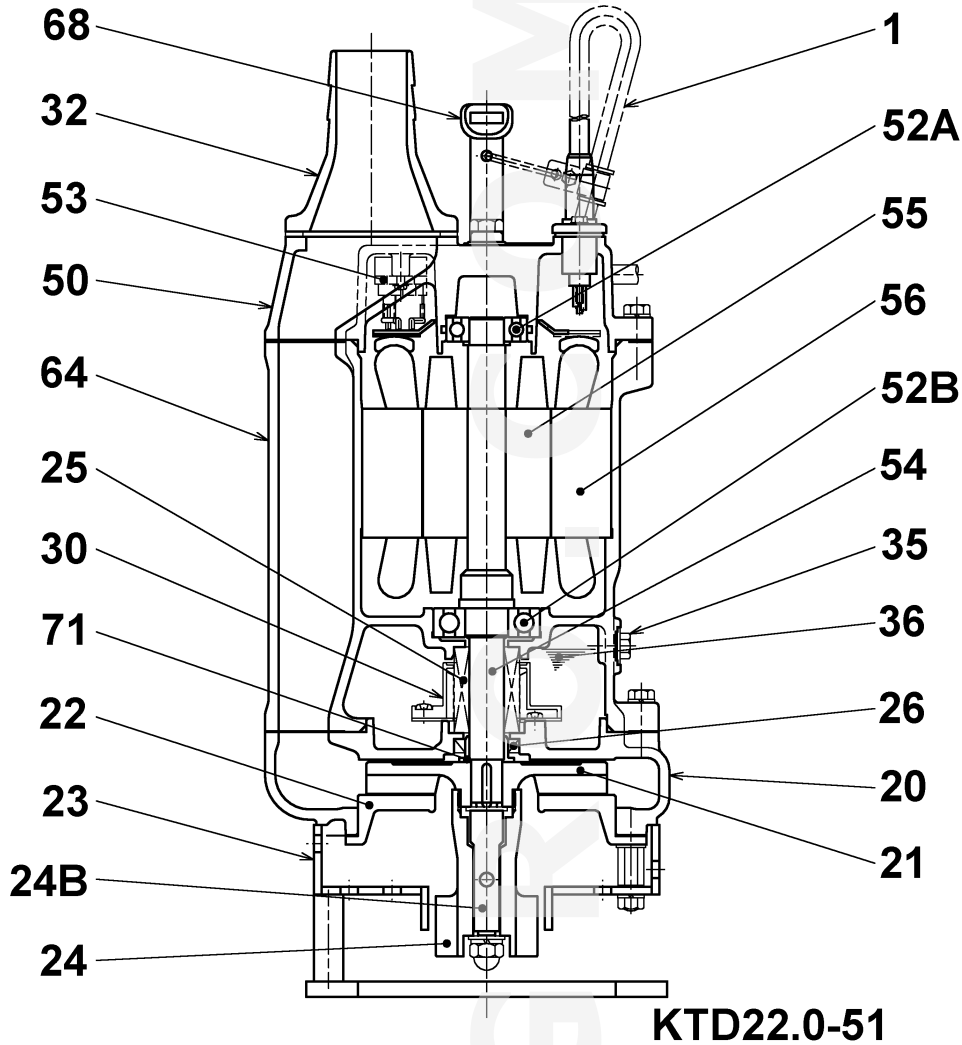
Dimensions KTD22.0-51



KTD22.0-51

CWL: Continuous running water level
LWL: Lowest running water level

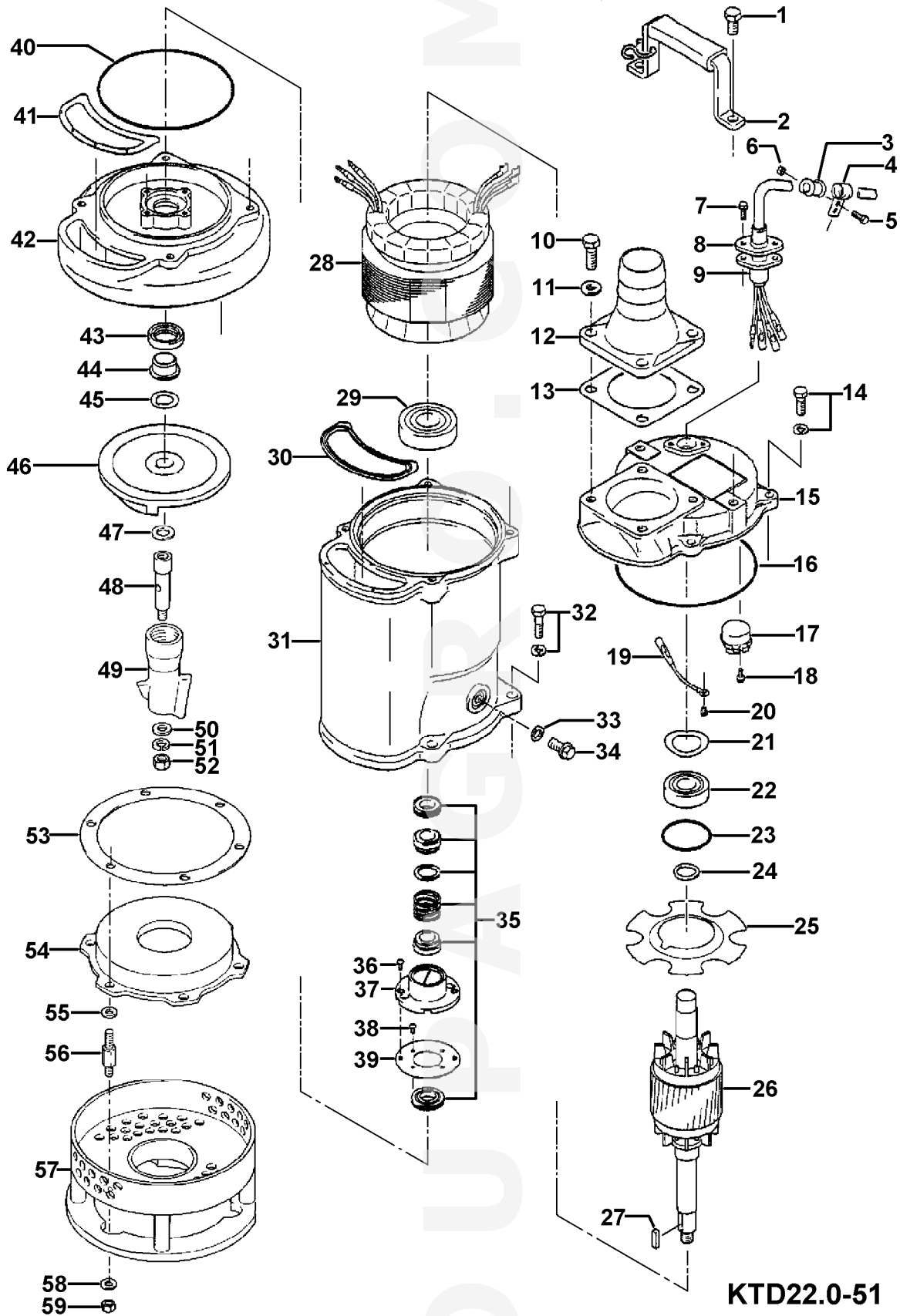
Sectional drawing KTD22.0-51



No.	Description	Remark	No.	Description	Remark
1	Cable	20m NSSHÖU	53	Motor Protector	.
20	Pump casing	FC200 (EN-GJL-200)	54	Shaft	SUS420J2 (EN-X30Cr13)
21	Impeller	Chromium Iron HiCrFC	55	Rotor	.
22	Suction cover	FCD50 (EN-GJS-500-7)	56	Stator	.
23	Strainer	Steel plate	64	Motor Frame	FC150 (EN-GJL-150)
24	Agitator	FCD700 (EN-GJS-700-2)	68	Handle	Steelplate and rubber
24B	Connection rod	Black malleable cast iron	71	Shaft protection sleeve	SUS304 (EN-X5CrNi18-10)
25	Mechanical seal	H-20T			
26	Oil seal	TC25388			
30	Oil distributor	Plastic			
32	Discharge coupling	Aluminium alloy casting			
35	Oil screw	SUS304 (EN-X5CrNi18-10)			
36	Lubricant	Turbine oil (ISO VG32)			
50	Main cover	FC150 (EN-GJL-150)			
52A	Upper bearing	6204ZZC3			
52B	Lower bearing	6305ZZC3			

KTD22.0-51			
Item	Item no.	Description	Quant.
1	140-074-15	Hex.Bolt M10x20 SUS304 (EN X5CrNi18-10) Stainless Steel	2
2	068-000-34	Handle KTZ1.5/2.2-61(USA) SPC+ NBR	1
3	010-126-17	Cable Clip Rubber HS2 NBR	1
4	010-105-10	Cable Clip SB SPC	1
5	140-018-37	Hex.Bolt M5x15 SWRM	1
6	141-003-58	Hex.Nut M5 SWRM	1
7	140-427-17	Hex.Bolt (w/Plain Washer) M5x15 SUS304 (EN X5CrNi18-10)	2
8	003-190-10	Gland SUS316 (EN X5CrNi-Mo17-12-2)	1
9	M01-TEG-31	Cabletyre Cable Set (20m) NSSHOU 4Cx1,5mm ²	1
10	140-000-01	Hex.Bolt M10x30(B=14) SUS304 (EN X5CrNi18-10) Stainless Steel	4
11	142-128-24	Plain Washer M10 Kaltgewalztes Blech	4
12	032-434-19	Hose Coupling (for EUR)KTZ(BSPT-2) FC	1
13	121-181-17	Packing KT-15 NBR	1
14	140-488-16	Hex.Bolt (w/Spring Washer) M8x30 SUS304 (EN X5Cr18-10)	4
15	050-420-18	Motor Bracket FC	1
16	122-140-17	O-Ring G-145 NBR	1
17	053-477-19	Motor Protector (380/415-50) KA313-GQXL104 (T.C)	1
18	143-126-12	Pan Screw (w/Spring Washer/Plain Washer) M4x12 SWRM	2
19	009-292-11	Earth Terminal 1.25mmx140L	1
20	143-085-34	Pan Screw (w/Spring Washer) M4x6 C3604 (EN CuZn39Pb3)	1
21	142-389-12	Wave Washer #6204 SK-5	1
22	052-187-16	Bearing (w/O-ring) AC-6204ZC3	1
23	122-293-16	O-Ring 47x3.1 NBR	1
24	061-174-18	Slinger d20xd27x2t SPC	1
25	058-000-13	Lead Wire Protection Plate d61xd136x2t (Resin)	1
26	055-706-16	Rotor	1
27	147-017-11	Impeller Key 5x5x20l SUS	1
28	056-001-19	Stator 380/400/415V-50Hz	1
29	052-108-13	Bearing 6305ZC3	1
30	121-507-13	Packing (Water Way, Upp.) KTZ21.5/32.2 NBR	1
31	064-000-10	Motor Frame (FC)	1
32	140-488-16	Hex.Bolt (w/Spring Washer) M8x30 SUS304 (EN X5Cr18-10)	4
33	121-246-11	Packing (Oil Plug) d10.3xd16x2t PE	1
34	035-125-13	Oil Plug M10x20(B=13) SUS304 (EN X5CrNi18-10) Stainless Steel	1
35	025-243-17	Mechanical Seal H-20T SIC	1
36	143-070-23	Pan Screw M5x6 SWRM	2
37	030-144-13	Oil Lifter H-20(A)(T) Resin	1
38	143-070-10	Pan Screw M5x6 SWRM	4
39	030-154-16	Seal Stopper H-20T SPCC	1
40	122-139-13	O-Ring G-140 NBR	1
41	121-501-17	Packing (Water Way, Low.) KTZ21.5/22.2 NBR	1
42	020-001-01	Pump Casing KTZ21.5/32.2 FC	1
43	026-105-19	Oil Seal TC-25388 NBR	1
44	071-314-13	Shaft Sleeve d20xd25x16l SUS304 (EN X5CrNi18-10) Stainless Steel	1
45	040-104-25	Impeller Shim d18.2xd29x0.3t SUS304 (EN X5CrNi18-10) Stainless Steel	1
46	021-554-12	Impeller (50Hz) 15H/50Hz HiC/FC	1
47	142-129-12	Plain Washer M12 SUS304 (EN X5CrNi18-10)	1
48	024-124-18	Clutch KTR-22S S45C	1
49	024-000-04	StirerKTD22.0 FCD	1
50	142-128-11	Plain Washer M10 SUS304 (EN X5CrNi18-10)	1
51	142-164-19	Spring Washer M10 SUS304 (EN X5CrNi18-10)	1
52	141-031-13	Hex.Cap Nut M10 SUS304 (EN X5CrNi18-10) Stainless Steel	1
53	120-110-12	Packing (S.Cover) d150xd186x0.3t PE	1
54	022-000-52	Suction Cover KTZ21.5/22.5 (FCD)	1
55	142-127-23	Plain Washer M8 SPC	3
56	144-000-63	Stud Bolt M8-22xM8-17x59L DIN 1.4006 (EN X12Cr13) Edelstahl	3
57	023-218-17	Strainer Stand KTR-22S SS	1
58	142-163-18	Spring Washer M8 SUS304 (EN X5Cr18-10)	3
59	141-005-18	Hex.Nut M8 SUS304 (EN X5CrNi18-10)	3
	173-513-13	Packing & O-Ring Set	1
	183-008-11	"Impeller Puller "A" Type No.3 1" "	1
	#oiivG32	ml Turbine Oil ISO VG32	740

Exploded View KTD22.0-51



KTD22.0-51