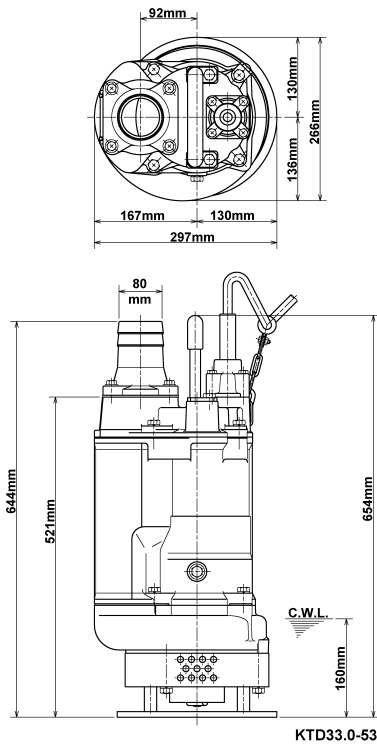
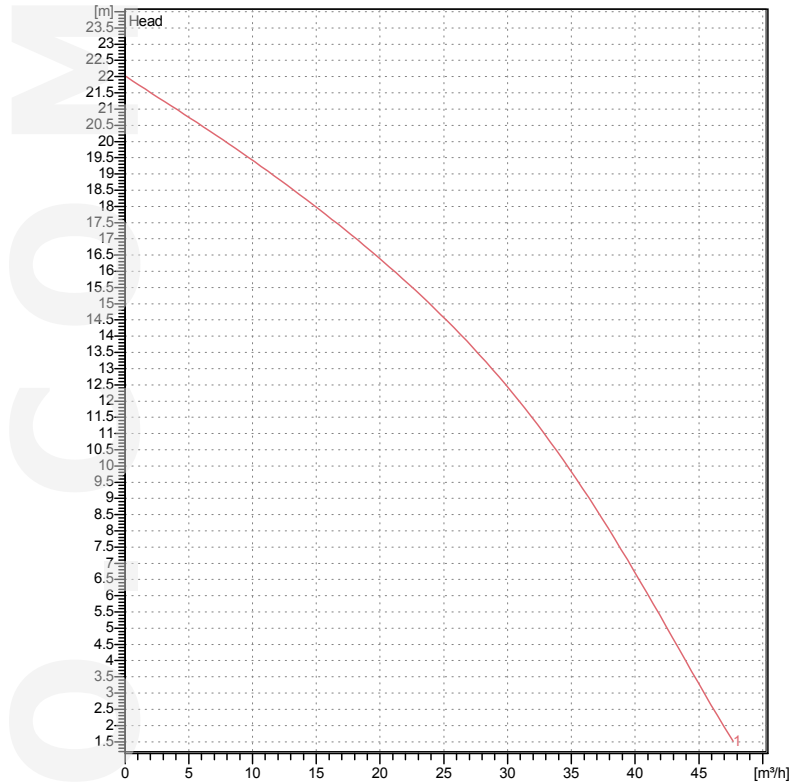


Data sheet KTD33.0-53



KTD33.0-53

CWL: Continuous running water level



Specification

Electric submersible pump
 Degree of protection IP 68
 Depth of submersion max. 25 m
 Type of impeller Semi-open
 Max. solid handling 10 mm
 Suitable for:
 spring-/rain-/waste-/ground water, water containing sand

Electric motor

Dry-type submersible induction motor
 Insulation class F 2Poles 2850 1/min
 Starting mode Directly
 Rated voltage 400 V 50 Hz 3~
 Power uptake 3.98 kW
 Rated power 3.00 kW
 Rated current 6.5 A
 Start current 58.0 A

Cable

20m NSSHÖU 4Cx1,5mm²

Motor Protection

Circle thermal protector
 (snap-action bi-metal device)

Shaft seal

Double inside mechanical seal in oil bath
 additional lubrication by oil lifting device
 Primary seal
 Silicon carbide on silicon carbide
 Secondary seal
 Silicon carbide on carbon

Bearings

Shielded ball bearings, maintenance-free

Materials

Impeller	Chromium iron casting
Agitator	FCD700 (EN-GJS-700-2)
Pump casing	FC200 (EN-GJL-200)
Suction cover	FCD50 (EN-GJS-500-7)
Motor Frame	FC150 (EN-GJL-150)
Shaft	SUS420J2 (EN-X30Cr13)

Discharge size

2" (50mm) BS-Coupling (threaded flange)

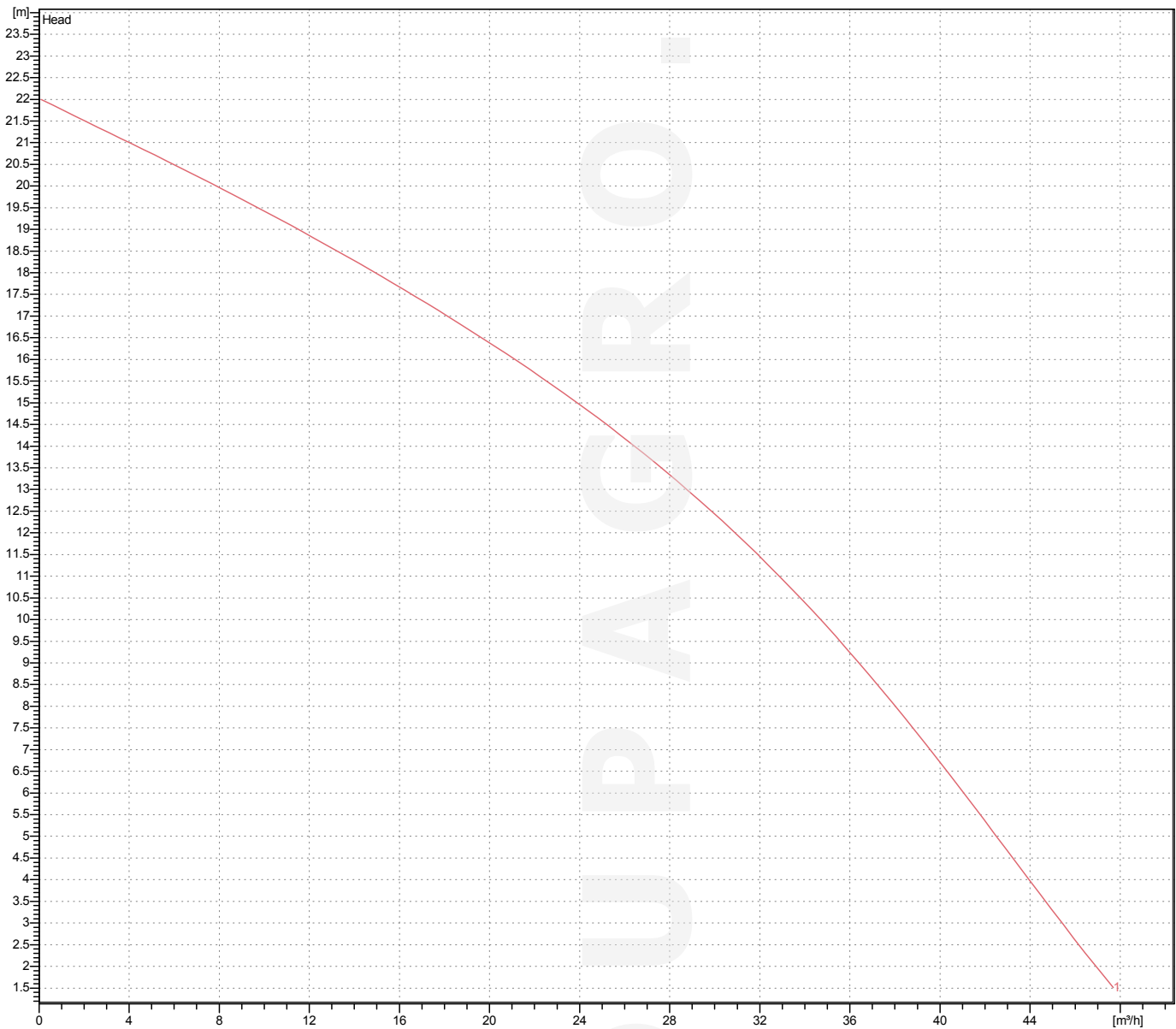
Weight

65 kg (dry weight of the pump only without cable)

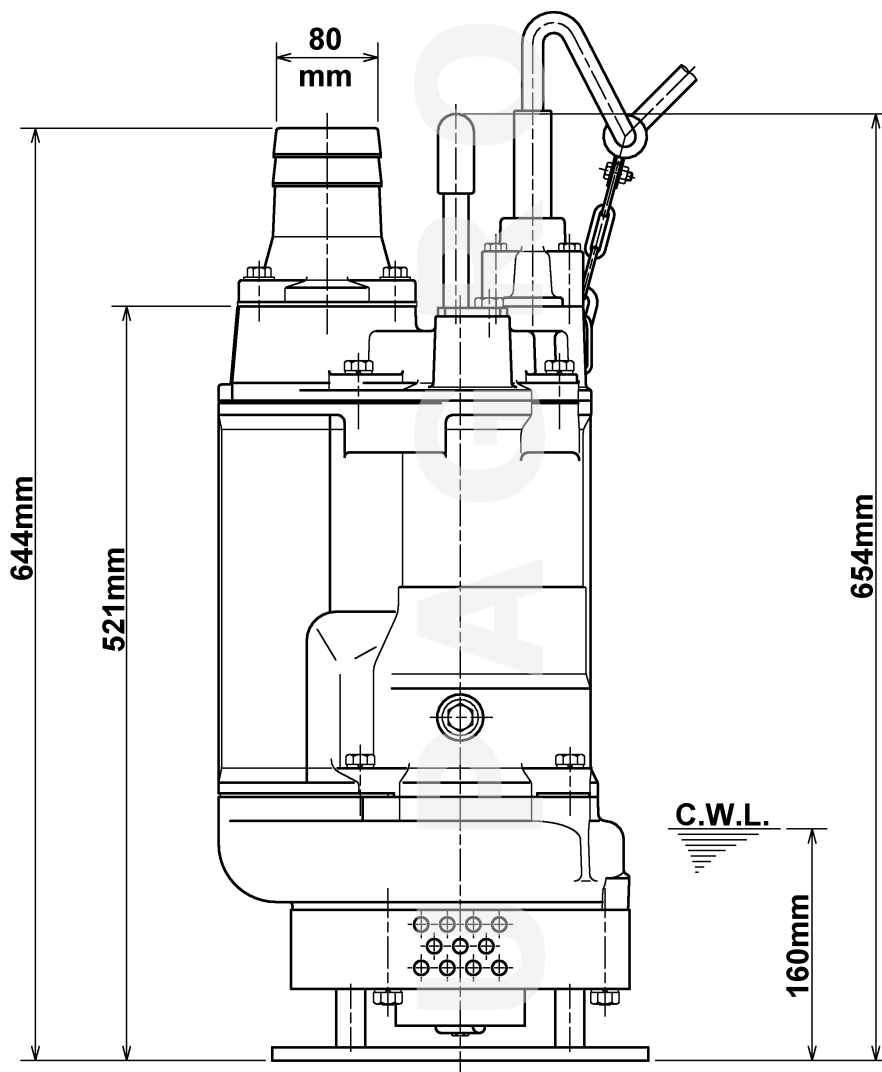
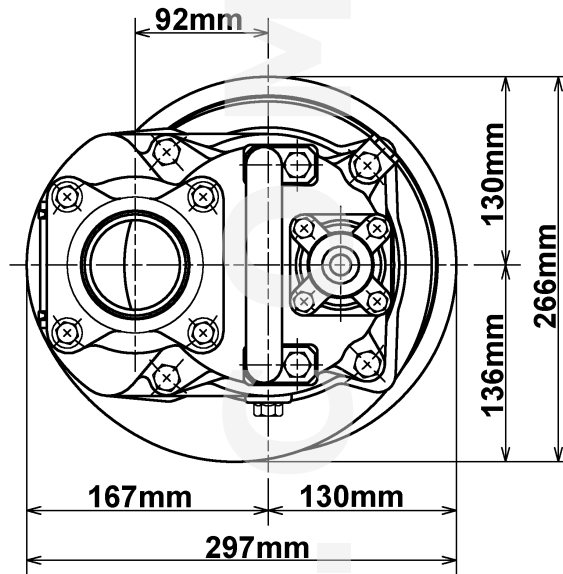
Performance curve

KTD33.0-53

Discharge port	3"
Head	22.0 m
Flow	47.7 m ³ /h
Rated power	3.00 kW
Power input	3.98 kW
Phases	3~
Voltages	400 V
Frequency	50 Hz
Rated current	6.5 A
Starting current	57.98 A
Number of poles	2
Speed	2850 1/min
Starting mode	Directly
Insulation class	F



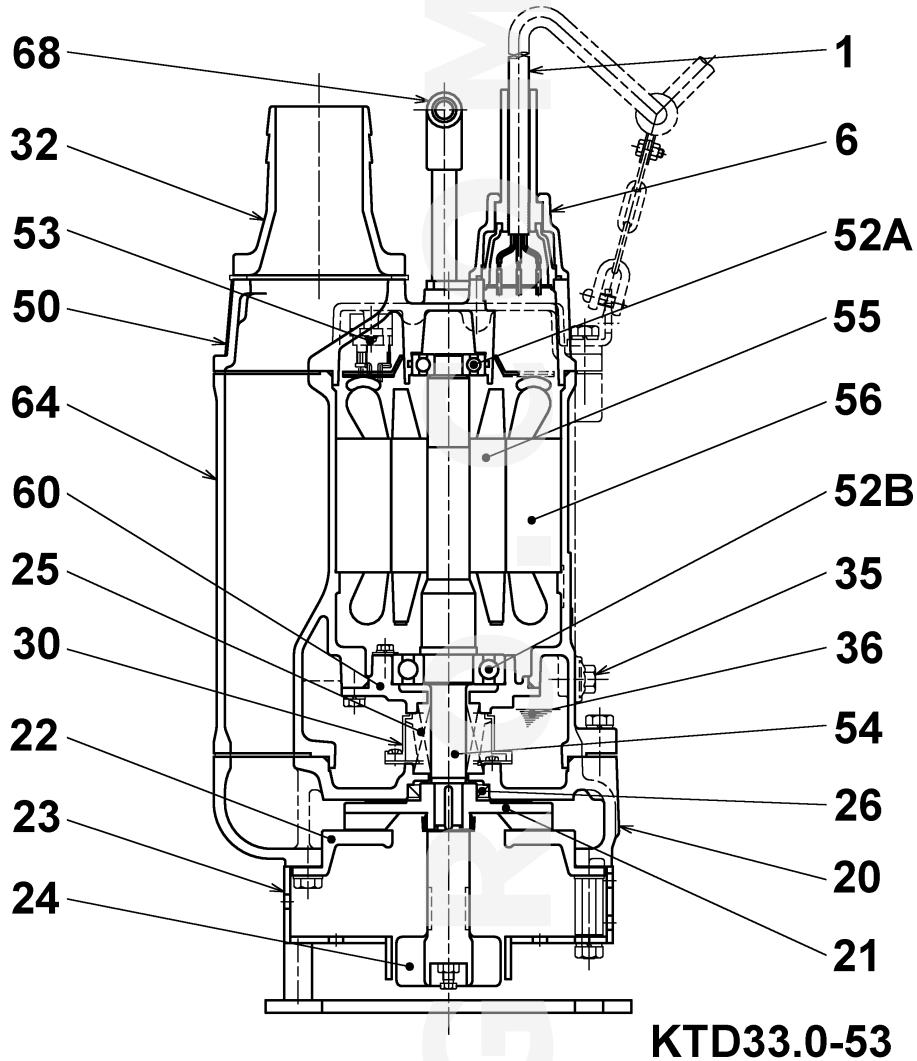
Dimensions KTD33.0-53



KTD33.0-53

CWL: Continuous running water level
LWL: Lowest running water level

Sectional drawing KTD33.0-53



No.	Description	Remark	No.	Description	Remark
1	Cable	20m NSSHÖU	53	Motor Protector	.
6	Stuffing box	FC200 (EN-GJL-200)	54	Shaft	SUS420J2 (EN-X30Cr13)
20	Pump casing	FC200 (EN-GJL-200)	55	Rotor	.
21	Impeller	Chromium iron casting	56	Stator	.
22	Suction cover	FCD50 (EN-GJS-500-7)	60	Bearing Housing	FC150 (EN-GJL-150)
23	Strainer	Steel plate	64	Motor Frame	FC150 (EN-GJL-150)
25	Mechanical seal	H-25T	68	Handle	steel pipe / Sectional steel
24	Agitator	FCD700 (EN-GJS-700-2)			
26	Oil seal	TC40588			
30	Oil distributor	Plastic			
32	Discharge coupling	Aluminium alloy casting			
35	Oil screw	SUS304 (EN-X5CrNi18-10)			
36	Lubricant	Turbine oil (ISO VG32)			
50	Main cover	FC150 (EN-GJL-150)			
52A	Upper bearing	6304ZZC3			
52B	Lower bearing	6307ZZC3			

KTD33.0-53

2016-10-17 V.18 / 1.10.2015

KTD33.0-53			
Item	Item no.	Description	Quant.
1	M01-TEG-02	Cabtyre Cable Set (20m) NSSHOU 4Cx2,5mm ²	1
2	010-151-11	Cable Clip Rubber 220/230/240V-50Hz(EUR) No.4 NBR	1
3	010-120-18	Cable Clip No.2-1 SPC	1
4	141-004-59	Hex.Nut M6 SWRM	1
5	140-032-37	Hex.Bolt M6x15 SWRM	1
6	095-131-18	Chain d4(3-Link) SS	1
7	011-110-11	Shackle 6mm SS	1
8	140-060-18	Hex.Bolt M8x50 SUS304	4
9	006-167-17	Stuffing Box No.1-3 FC	1
10	122-121-12	O-Ring G-50 NBR	1
11	004-167-11	Cable Bush No.1 CR	1
12	008-156-19	Mould Cover No.1-3 ADC	1
13	009-126-13	Terminal 1.25mm2/2mm2 Nylon	4
14	002-135-14	Heat Shrink Tube (Sold per meter) A(d15x0.3t) (Vm)	1
15	140-079-10	Hex.Bolt M10x40 SUS304 (EN X5Cr18-10)	4
16	142-164-19	Spring Washer M10 SUS304 (EN X5CrNi18-10)	4
17	070-117-11	L-Shape Fitting 40x25x4.5t d13Hole SPC	1
18	140-074-15	Hex.Bolt M10x20 SUS304 (EN X5CrNi18-10) Stainless Steel	2
19	068-000-36	Handle KTZ23.7/45.5 SGP+SS	1
20	140-000-01	Hex.Bolt M10x30(B=14) SUS304 (EN X5CrNi18-10) Stainless Steel	4
21	142-128-24	Plain Washer M10 Kaltgewaltes Blech	4
22	032-437-12	Hose Coupling (for EUR)KTV(BSPT-3) FC	1
23	121-141-15	Packing KRB-3/4 T Type NR	1
24	050-419-14	Motor Bracket FC	1
25	122-276-13	O-Ring 160xd3.1 NBR	1
26	053-222-17	Motor Protector 380/400/415V-50HZ KA314-HMXL00 (H.C)	1
27	143-126-12	Pan Screw (w/Spring Washer/Plain Washer) M4x12 SWRM	2
28	009-293-12	Earth Terminal 2mm2x180l	1
29	143-085-34	Pan Screw (w/Spring Washer) M4x6 C3604 (EN CuZn39Pb3)	1
30	142-196-10	Wave Washer 6205/6304 SK5	1
31	052-107-12	Bearing 6304ZZC3	1
32	122-367-12	O-Ring 52xd3.1 NBR	1
33	058-000-04	Lead Wire Protection Plate d66xd150x1.5t Bakelite	1
34	055-002-82	Rotor	1
35	147-026-13	Impeller Key 5x5x25l Stainless Steel	1
36	056-001-29	Stator 380/400/415V-50Hz	1
37	121-506-12	Packing (Water Way, Upp.) KTZ23.7/33.7/43.7 NBR	1
38	064-000-19	Motor Frame FC	1
39	140-078-19	Hex.Bolt M10x35 SUS304 (EN X5CrNi18-10)	4
40	142-164-19	Spring Washer M10 SUS304 (EN X5CrNi18-10)	4
41	121-247-12	Packing (Oil Plug) d12.3xd18x2t PE	1
42	140-000-17	Hex.Bolt (w/Flange) M12x15(Oil Plug) SUS304 (EN X5CrNi18-10) Stainless Steel	1
43	140-000-23	Hex.Bolt (w/Spring Washer) M5x10 SWRM	4
44	062-000-02	Bearing Cover d5.5xd18x2t SPC	4
45	052-110-18	Bearing 6307ZZC3	1
46	122-133-17	O-Ring G-110 NBR	1
47	060-001-76	Bearing Housing FC	1
48	142-163-34	Spring Washer M8 SWRH	4
49	140-054-48	Hex.Bolt M8x20 SWRM	4
50	025-000-07	Mechanical Seal H-25T SiC	1
51	143-070-23	Pan Screw M5x6 SWRM	2
52	030-143-12	Oil Lifter H-25(A)(T) Resin	1
53	143-070-10	Pan Screw M5x6 SWRM	4
54	030-148-17	Seal Stopper For HT-2530 SPCC	1
55	122-283-13	O-Ring 165xd3.1 NBR	1
56	121-124-12	Packing (Water Way, Low.) KTV-37/55 NBR	1
57	020-001-02	Pump Casing KTZ23.7/33.7/43.7 FC	1
58	026-144-49	Oil Seal TC-40588 NBR	1
59	040-106-27	Impeller Shim d20.2xd30x0.3t SUS304 (EN X5CrNi18-10) Stainless Steel	1
60	021-L17-18	Impeller (60Hz) 60Hz HiCrFC	1
61	047-104-26	Impeller Thread Protect.Cover No.3B(18) SUS304 (EN X5CrNi18-10) Stainless Steel	1
62	024-129-13	Stirrer KTV-80 FCD	1
63	141-005-18	Hex.Nut M8 SUS304 (EN X5CrNi18-10)	1
64	140-068-45	Hex.Bolt M8x90(B=10) SUS304 (EN X5CrNi18-10) Stainless Steel	1
65	120-109-21	Packing (S.Cover) d180xd220x0.3t PE	1
66	022-000-55	Suction Cover KTZ33.7 (FCD)	1
67	142-128-24	Plain Washer M10 Kaltgewaltes Blech	3
68	144-000-59	Stud Bolt M10x77(20/17) DIN 1.4006 (EN X12Cr13) Edelstahl	3
69	142-128-24	Plain Washer M10 Kaltgewaltes Blech	3
70	140-074-15	Hex.Bolt M10x20 SUS304 (EN X5CrNi18-10) Stainless Steel	3
71	023-490-15	Strainer StandKTD33.0 SS	1
72	142-164-19	Spring Washer M10 SUS304 (EN X5CrNi18-10)	3
73	141-006-19	Hex.Nut M10 SUS304 (EN X5CrNi18-10)	3
	173-514-14	Packing & O-Ring Set	1
	183-008-11	"Impeller Puller "A" Type No.3 1" " "	1
	##oilVG32	ml Turbine Oil ISO VG32	1200

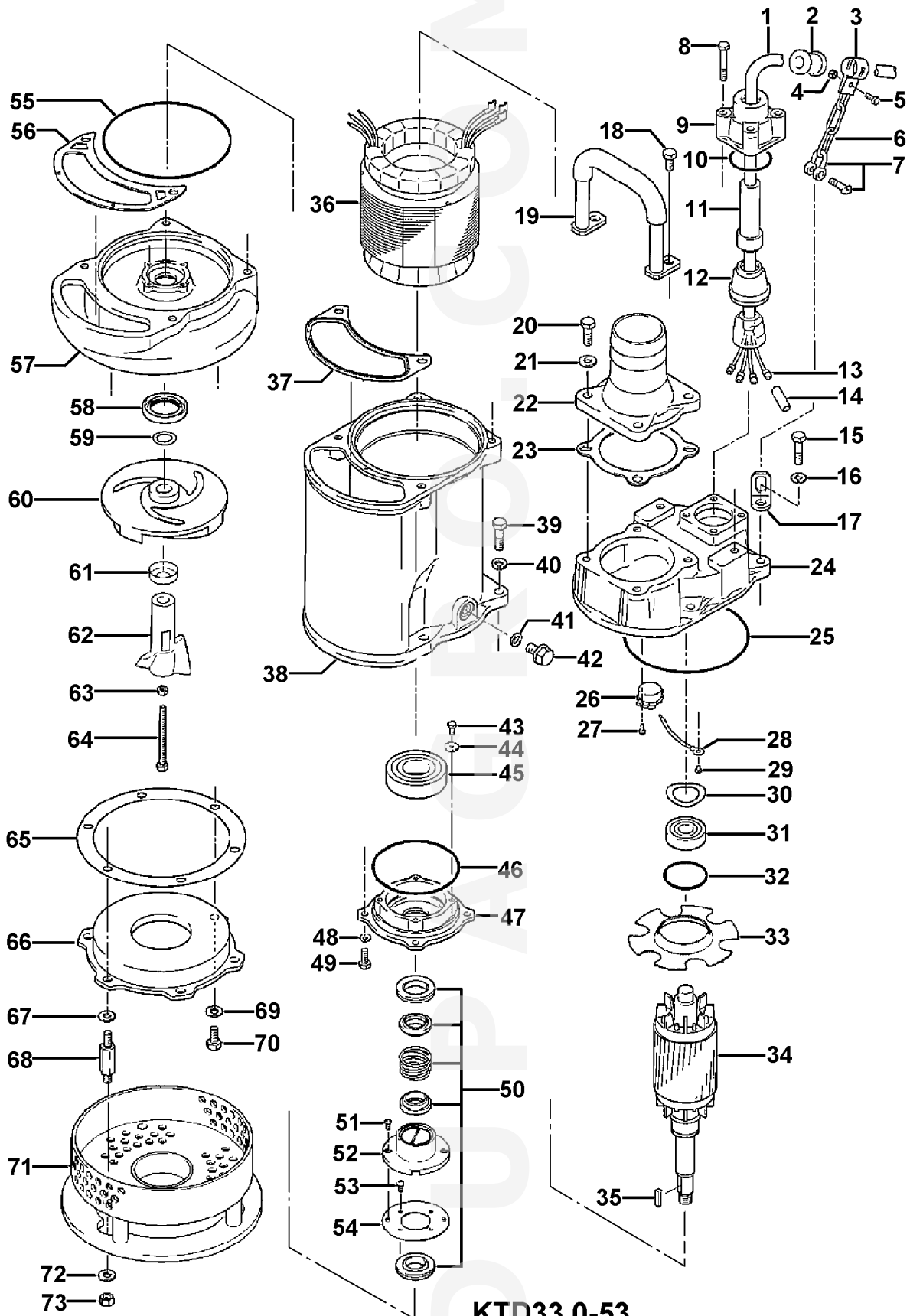
Dupagro B.V.

 Ooststeeg 102
 6708 AX Wageningen
 The Netherlands

Phone +31 (0) 317 840 197

info@dupagro.com
www.dupagro.com

Exploded View KTD33.0-53



KTD33.0-53

Dupagro B.V.
Ooststeeg 102
6708 AX Wageningen
The Netherlands

Phone +31 (0) 317 840 197
info@dupagro.com
www.dupagro.com

