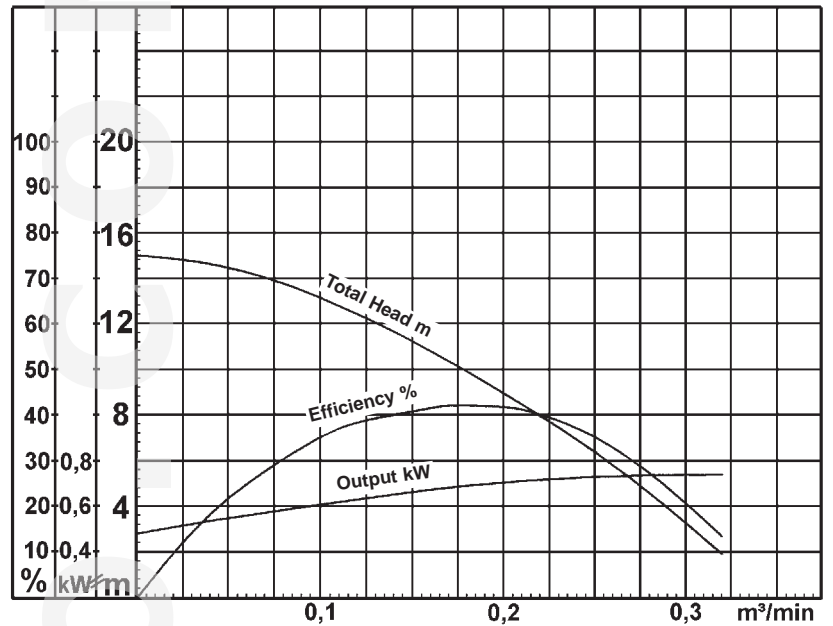
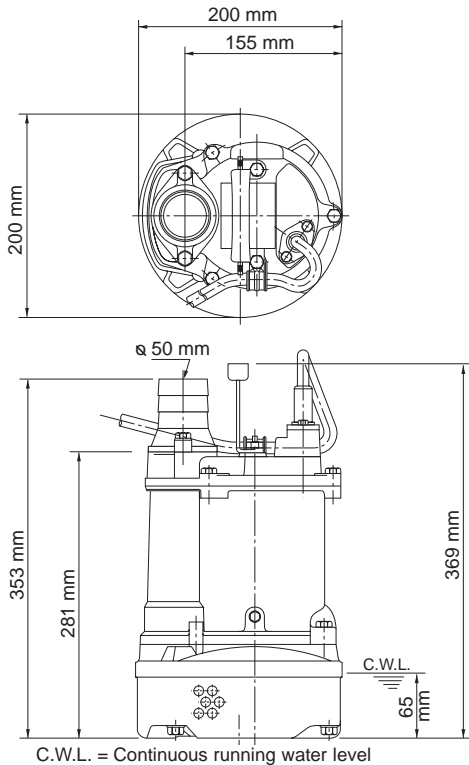


# Data Sheet KTV2-8



KTV2-8

KTV2-8 (A-03300-1)

## Classification

Electric submersible pump  
 Protection class IP68  
 Depth of submersion max. 20m  
 Semi-vortex impeller  
 Max. solid handling 6mm  
 Suitable for rain water, ground water, sand carrying water

## Electric Motor

Dry-type submersible induction motor,  
 Insulation class E, 2 poles, 2780 r.p.m.  
 Direct on line start  
 Voltage: 400V, 50Hz, 3-phase  
 Power input: 1,16kW  
 Power output: 0,75kW  
 Nominal current: 1,8A  
 Start current: 9,0A

## Electric Cable

10m H07RN-F 4Cx1,5mm<sup>2</sup>

## Motor Protection

Circle thermal protector  
 (snap-action bi-metal device)

## Shaft Seal

Double mechanical seal in oil bath  
 additional lubrication by oil lifting device  
 Primary Seal:  
 silicon carbide on silicon carbide  
 Secondary Seal:  
 carbon on ceramic

## Bearings

Shielded ball bearings, maintenance-free

## Materials

Impeller:	Urethane rubber
Casing:	Synthetic rubber
Motor frame:	Aluminium alloy casting
Shaft:	SUS420J2 (EN-X30Cr13)

## Discharge Connection

2" (50mm) hose coupling

## Weight

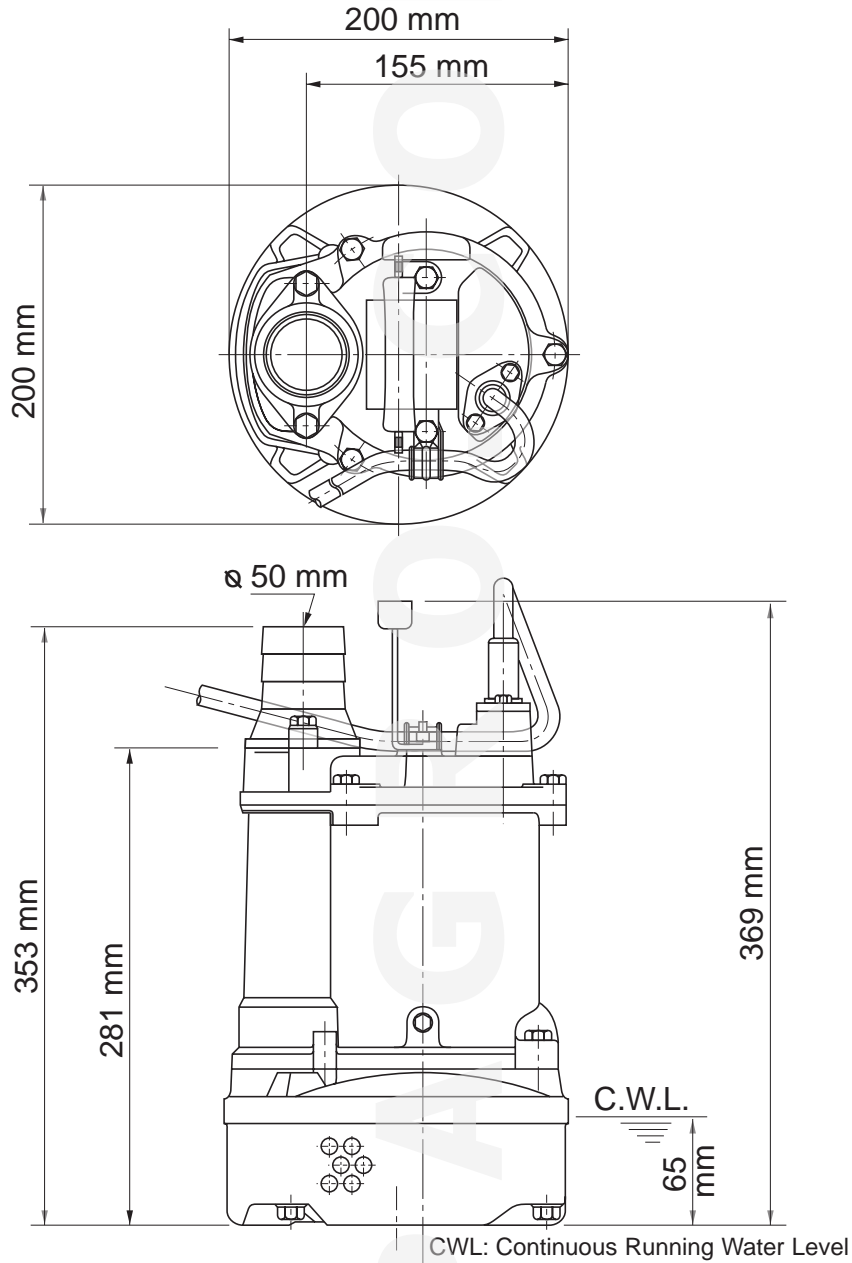
11,5 kg (dry weight of the pump without cable)

## Dupagro B.V.

Ooststeeg 102  
 6708 AX Wageningen  
 The Netherlands

Phone +31 (0) 317 840 197  
[info@dupagro.com](mailto:info@dupagro.com)  
[www.dupagro.com](http://www.dupagro.com)

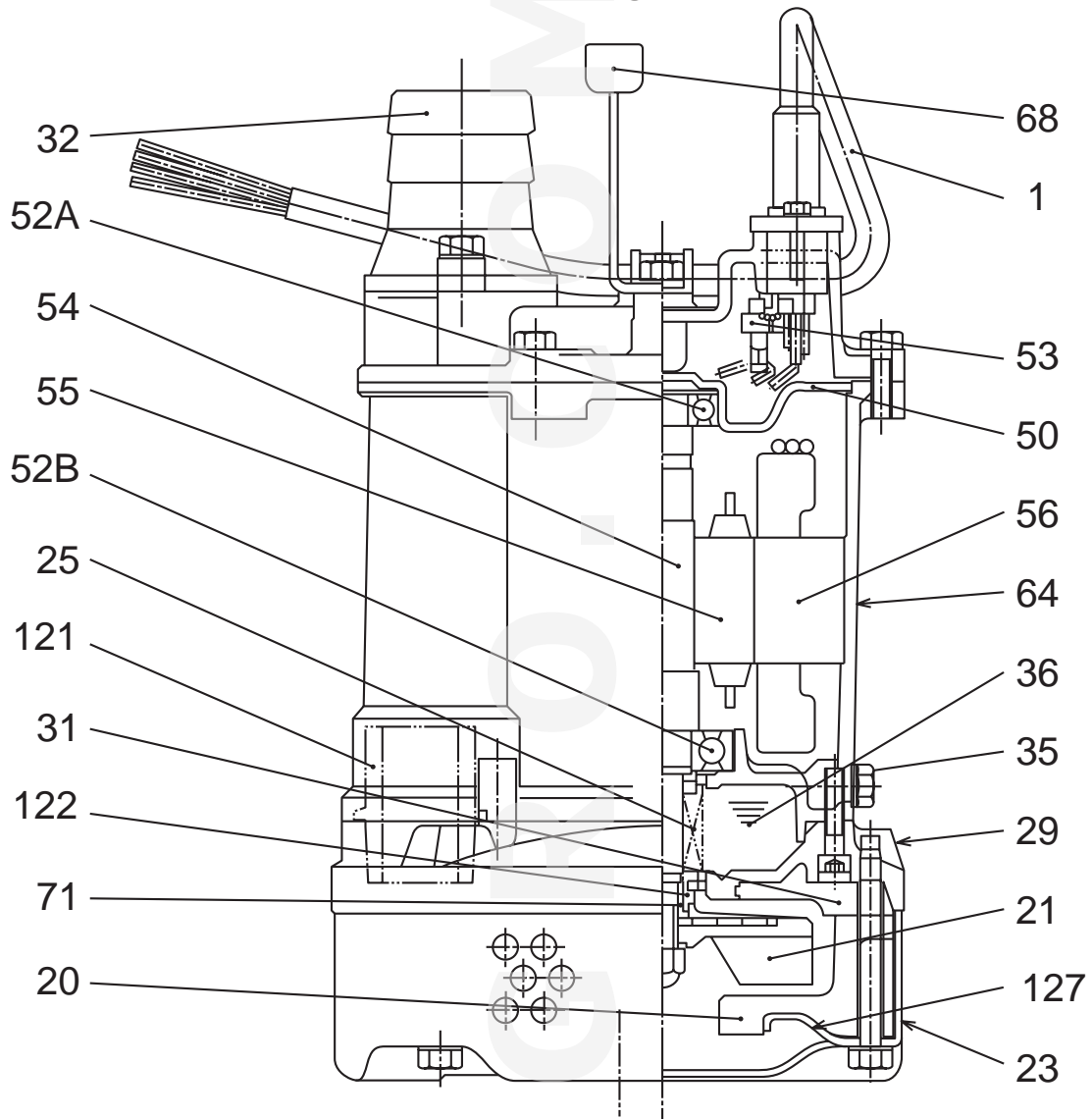
# Dimensional Drawing KTV2-8



**KTV2-8**

# Sectional Drawing

## KTV2-8

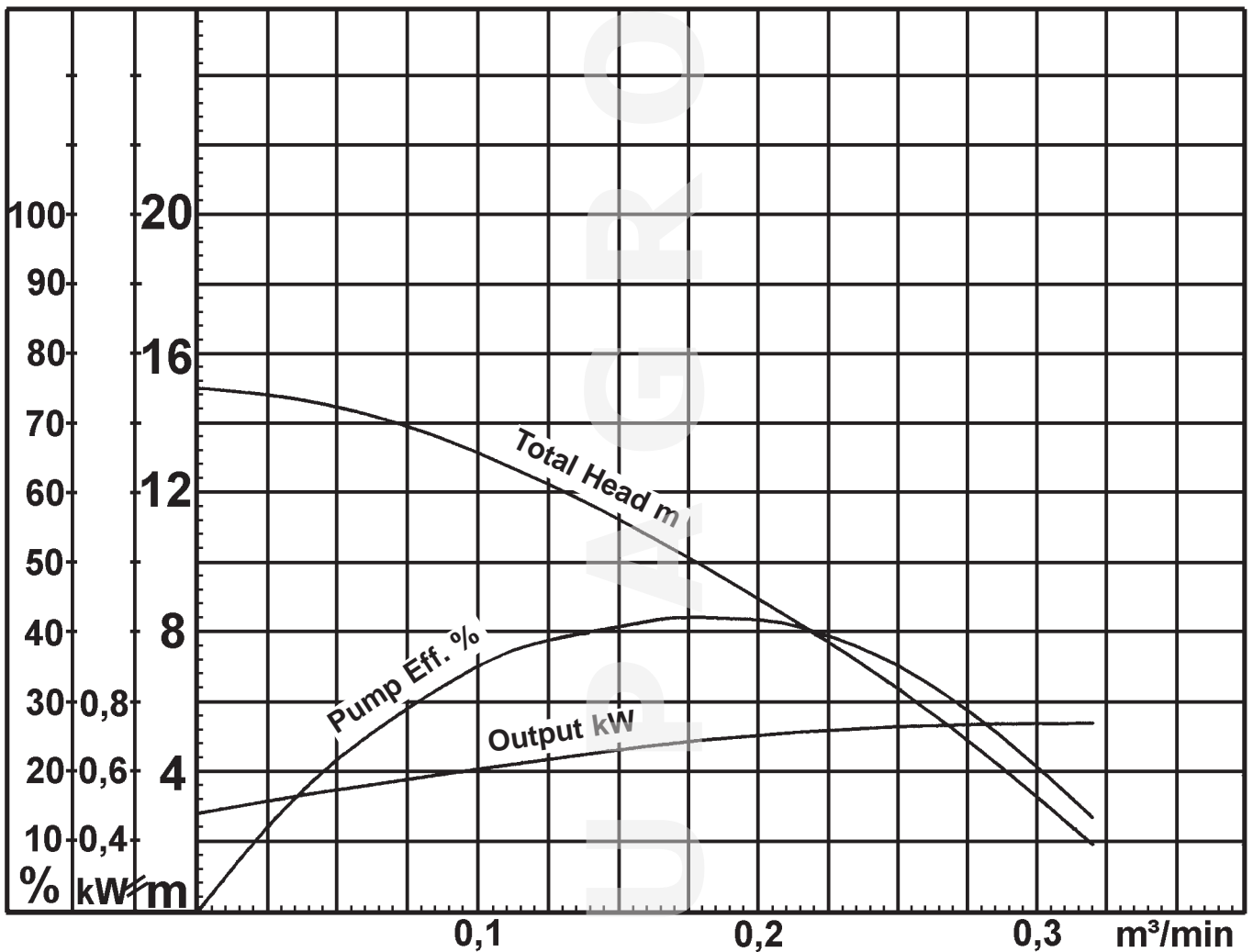

**KTV2-8**

No.	Description	Qty.	Remarks	No.	Description	Qty.	Remarks
1	Cabtyre Cable	1	H07RN-F	54	Shaft	1	SUS420J2 (EN-X30Cr13)
20	Pump Casing	1	Rubber	55	Rotor	1	
21	Impeller	1	Urethane Rubber	56	Stator	1	
23	Strainer	1	Steel Plate	64	Motor Frame	1	Aluminium
25	Mechanical Seal	1	W-14VL	68	Handle	1	Steel + Rubber
29	Oil Casing	1	Aluminium	71	Shaft Sleeve	1	SUS304 (EN-X5CrNi18-10)
31	Liner	1	Rubber	121	Packing	1	Rubber
32	Hose Coupling	1	Aluminium	122	V-Ring	1	Nitrile Rubber
35	Oil Plug	1	SUS304 (EN-X5CrNi18-10)	127	Retainer	1	Steel Plate
36	Lubricant		Turbine Oil (ISO VG32)				
50	Motor Bracket	1	Aluminium				
52A	Upper Bearing	1	6203ZZC3				
52B	Lower Bearing	1	6204ZZC3				
53	Motor Protector	1					

# Pump Performance Curve

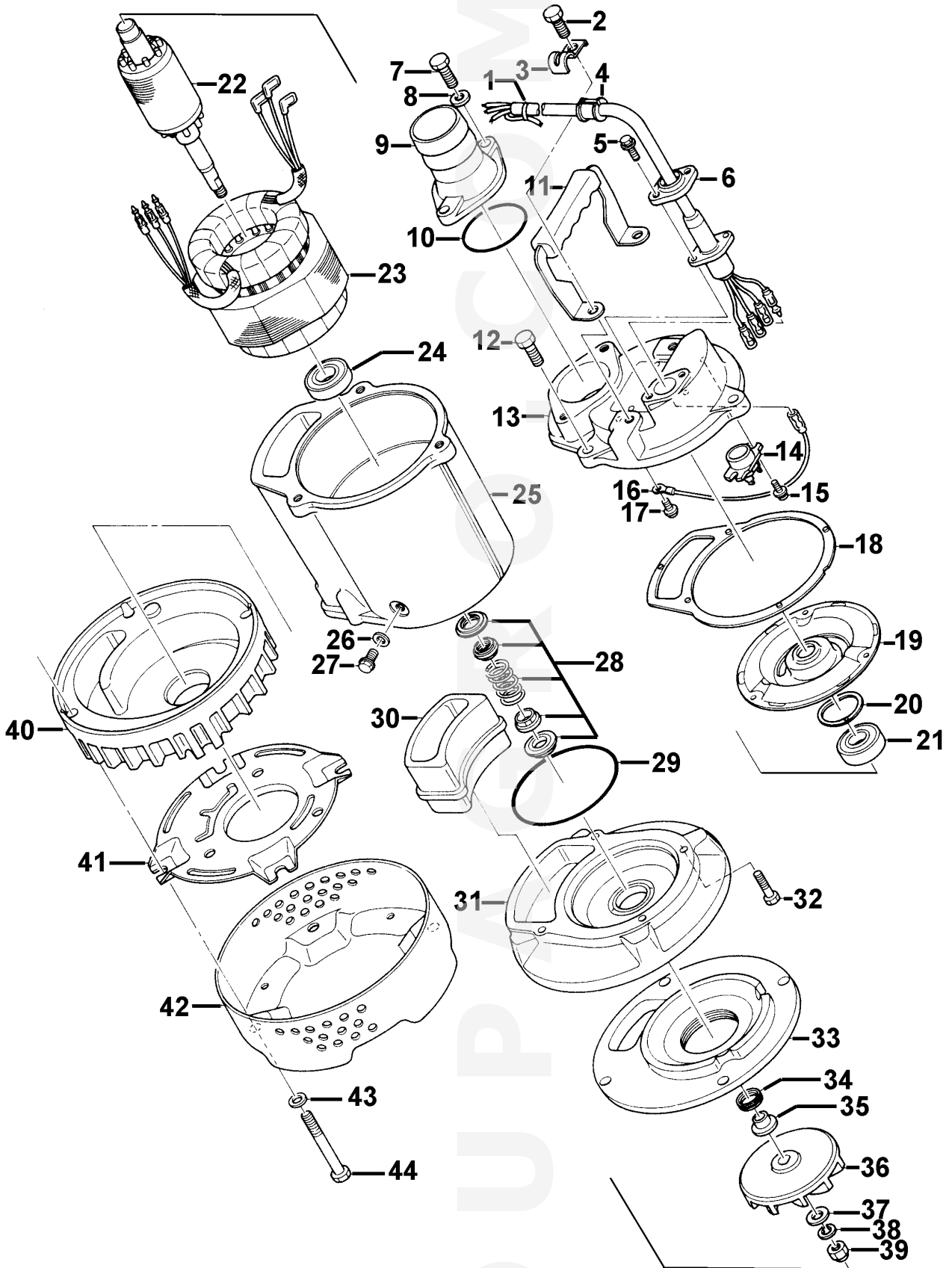
## KTV2-8

Discharge Bore	50 mm
Total Head	10 m
Capacity	0,18 m <sup>3</sup> /min
Motor Output	0,75 kW
Motor Input	1,16 kW
Phase	3
Voltage	400 V
Frequency	50 Hz
Rated Current	1,8 A
Starting Current	9,0 A
Poles	2
Revolution	S.S. 2780 r.p.m.
Starting Method	direct on line
Insulation Class	E


**KTV2-8 (A-03300-1)**

KTV2-8			Quant.
Item	Item no.	Description	
1	001-TEG-31	Cabtyre Cable Set (20m) H07RN-F4Cx1,5mm <sup>2</sup> with gland	1
1	MD1-TEG-31	Cabtyre Cable Set (20m) NSSHÖU 4Cx1,5mm <sup>2</sup>	1
2	140-054-19	Hex.Bolt M8x20 SUS304 (EN X5Cr18-10)	2
3	010-112-10	Cable Clip LB2-480 SPC	1
4	010-126-17	Cable Clip Rubber HS2 NBR	1
5	140-427-17	Hex.Bolt (w/Plain Washer) M5x15 SUS304 (EN X5CrNi18-10)	2
6	003-190-10	Gland SUS316 (EN X5Cr-Ni-Mo17-12-2)	1
7	140-055-10	Hex.Bolt M8x25 SUS304 (EN X5CrNi18-10)	2
8	142-210-11	Plain Washer d8.6xd13.4x1t SUS304 (EN X5CrNi18-10) Stainless Steel	2
9	032-000-67	Hose Coupling 50mm(LB2-480) ADC	1
9	032-000-59	Hose Coupling (for EUR)BSPT-2 FC	1
10	121-138-19	Packing (Screwed Flange) LB(P.C.84) NBR	1
11	068-136-22	Handle LB SPC	1
12	140-055-10	Hex.Bolt M8x25 SUS304 (EN X5CrNi18-10)	3
13	051-221-10	Motor Head Cover ADC	1
14	053-443-16	Motor Protector 380/400/415V-50HZ KA311-DAXL68 (T.C)	1
15	143-126-12	Pan Screw (w/Spring Washer/Plain Washer) M4x12 SWRM	2
16	009-127-14	Terminal R-1.25-4 CU	1
17	143-805-34	Pan Screw (w/spring washer /plain washer) M4x6 (SWRM)	1
18	121-455-15	Packing KTV2-8 CR	1
19	050-408-10	Motor Bracket SPHC	1
20	142-194-18	Wave Washer #6203 SK-5	1
21	052-102-17	Bearing 6203ZZC3	1
22	055-678-18	Rotor	1
23	056-002-43	Stator 380/400/415V-50Hz	1
24	052-187-16	Bearing (w/O-ring) AC-6204ZZC3	1
25	064-473-19	Motor Frame ADC	1
26	121-248-13	Packing d8.2xd13.5x2t PE	1
27	035-126-14	Oil Plug M8x16(B=13) SUS304 (EN X5CrNi18-10) Stainless Steel	1
28	025-000-45	Mechanical Seal W-14VCA SiC	1
29	122-131-15	O-Ring G-100 NBR	1
30	121-001-05	Packing KTV2-8Synthetic Rubber	1
31	029-407-13	Oil Casing KTV2-8 (ADC)	1
32	140-253-10	Hex. Socket Cap Bolt M6x25 SUS304 (EN X5CrNi18-10) Stainless Steel	4
33	031-141-26	Wear Ring KTV2-8 BR+NR	1
34	122-441-11	V-Ring VR-14 NBR	1
35	071-292-14	Shaft Sleeve LB3-250/480 SUS304 (EN X5CrNi18-10) Stainless Steel	1
36	021-007-52	Impeller (50HZ) 50Hz Urethane Rubber	1
37	142-127-23	Plain Washer M8 SPC	1
38	142-210-11	Plain Washer d8.6xd13.4x1t SUS304 (EN X5CrNi18-10) Stainless Steel	1
39	141-030-12	Hex.Cap Nut M8 SUS304 (EN X5CrNi18-10) Stainless Steel	1
40	020-881-34	Pump Casing (New) KTV2-8 BR+NR	1
41	127-251-17	Fixing Plate (New) KTV2-8 SPCC	1
42	023-439-16	Strainer Stand KTV2-8 SPCC	1
43	142-127-23	Plain Washer M8 SPC	4
44	140-064-12	Hex.Bolt M8x70 SUS304 (EN X5CrNi18-10) Stainless Steel	4
	173-490-13	Packing & O-Ring Set	1
	##oilVG32	ml Turbine Oil ISO VG32	150

# Exploded View KTV2-8



**KTV2-8**

